



LEGENDEX INTERCOOLER

PRODUCT CODE: CI-SETBT50-2

Isuzu Dmax 2021-current/Mazda BT50 2021-current

PRODUCT CODE: CI-SETBT50-2

CHECK YOUR PACK LIST

Once you have unpacked the Intercooler from the box make sure you have all parts that are listed on the packing list below and check for any damage as no damage claim will be accepted once installation has begun.

PRODUCT CODE: CI-SETBT50-2

COMPONENTS

INTERCOOLER UNIT	1
Bracket Spacer Washers	4
Cold Intercooler Outlet Pipe	1
Hot Intercooler Intake Pipe	1
2" Silicone Hump Hose	4
1/8" NPT plug	1
Zip Tie	1
Hose Clamps	8

TOOLS REQUIRED

- 1/4" and 3/8" drive ratchets with extensions
- Metric socket sets (short and deep recommended)
- Metric wrench sets
- Phillip's-head and Flat head screwdriver
- Sharp serrated knife, Hacksaw or cutting disk (to cut plastic)
- Marking Pen



! IMPORTANT !

CAREFULLY READ THE IMPORTANT SAFETY PRECAUTIONS AND WARNINGS BEFORE PROCEEDING WITH THE INSTALLATION!

- Take care when handling the intercooler as the fins can easily be damaged.
- It's very important to check that you have all the components before you start.
- Before installing your intercooler, park your vehicle on level ground ensuring it is in gear (or Park) and the handbrake is applied.
- Block the front and rear tyre surfaces to prevent unexpected vehicle movement
- Wear protective clothing including eye wear when installing the intercooler kit.
- Wait until the vehicle's engine has completely cooled BEFORE you begin to remove the existing intercooler.
- Disconnect the Battery before the removal of the factory intercooler

PRODUCT CODE: CI-SETBT50-2

! WARNING !

- Do not use this product in any other motor vehicle for which it is not designed.
- Do not use any other mounting location / method other than described in this instruction.
- Do not repair or modify this product and / or its mounting bracket in any way - repair or modification may affect proper operation of the vehicle or cause destruction of property.
- Be sure to clean and remove any loose debris before removing pipe work as debris entering the engine could be detrimental to the engine and or components

! REMOVING FACTORY INTERCOOLER !

Special care should be taken to label parts and avoid damaging items as removed since many items will be reused.

Removal of the entire front bumper bar (with grille intact) is necessary for fitment with the majority of the fastening hardware being scrivenets which are easily removed, but many are hidden below the black plastic radiator trim pane

REMOVING FACTORY INTERCOOLER

PRODUCT CODE: CI-SETBT50-2

STEP 1

Get started by opening your Bonnet, then cover the fenders with fender covers to protect vehicles finish.

STEP 2

Disconnect Battery

STEP 3

Remove airbox intake by first removing 2 x scrivets with flat blade screwdriver and lifting directly upwards

STEP 4

Remove 11 x scrivets indicated with red arrows to allow access to 2 x phillips head screws which need to be removed, indicated by green arrows. The rubber weatherstrip near the headlights may need to be lifted to allow easier access to removing the scrivets.

STEP 5

Remove 4 x scrivets from inside the grille and 1 x phillips head screw from inside the badge

STEP 6

Moving underneath the front bumper bar, both driver side and passenger side front bar lower plastic trims need to be removed to access the scrivets underneath.

STEP 3



STEP 4



STEP 3



REMOVING FACTORY INTERCOOLER

PRODUCT CODE: CI-SETBT50-2

STEP 7

Remove 4 x remaining scrivets

STEP 7



STEP 8

Remove 4 x small scrivets inside each wheel arch area carefully, as these are prone to breaking easily

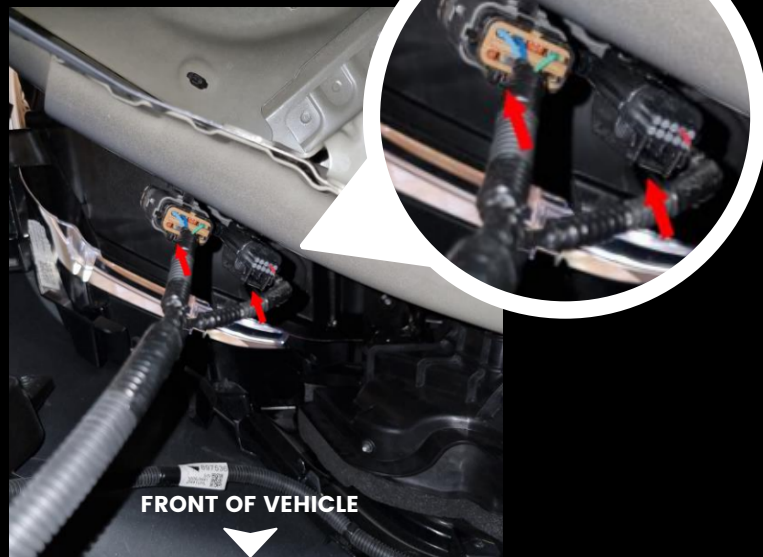
STEP 8



STEP 9

Move the passenger side wheel arch liner away from the bar enough to gain access to inside the front bar to release both wiring harness connectors with a narrow flat blade screwdriver

STEP 9



STEP 10

Release the front bumper bar from each fender (front guards) by firmly pulling in the direction of the curbside or road. The front bumper bar should now be able to be removed with care as to not scratch the paintwork or damage the headlight assemblies.

REMOVING FACTORY INTERCOOLER

PRODUCT CODE: CI-SETBT50-2

STEP 11

Remove lower front bar brackets on driver & passenger side as shown. This will assist in removal of the lower half of the plastic ducting

STEP 11



STEP 12

Remove 8 x scrivenets securing both upper driver side & passenger plastic ducts and entire lower plastic duct. The ducts can all be removed

STEP 12



STEP 12



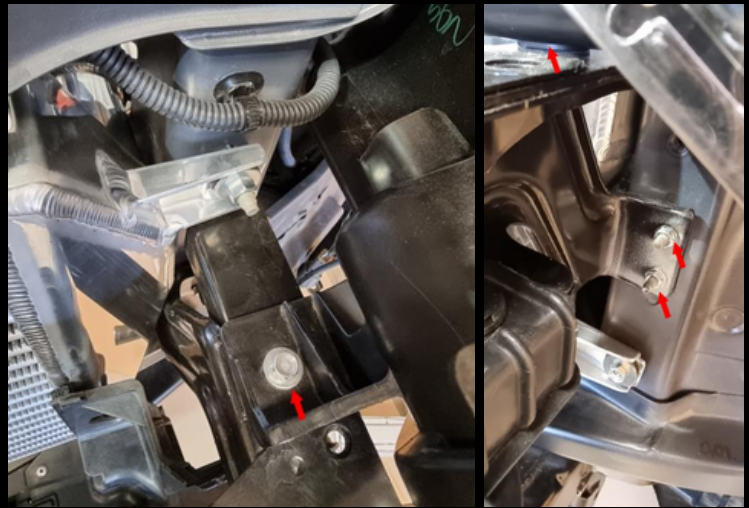
REMOVING FACTORY INTERCOOLER

PRODUCT CODE: CI-SETBT50-2

STEP 13

Remove front bumper bar support by removing 6 x nuts and 2 x bolts securing the headlights. Unclip sensor before removing

STEP 13



STEP 14

Remove both horn brackets and place over the top of the radiator out of the way. Unbolt 2 x upper and 2 x lower bolts from bonnet latch upright, removing as a complete assembly. Unclip all 3 harness clips and bonnet release cable and place out of the way for easier OEM intercooler removal and to avoid damage to air conditioning condenser directly behind.

STEP 14



STEP 15

Remove white clip from temperature sensor to allow the harness to be released and remove sensor from OEM Intercooler to be refitted to your Intercooler

STEP 15



STEP 16

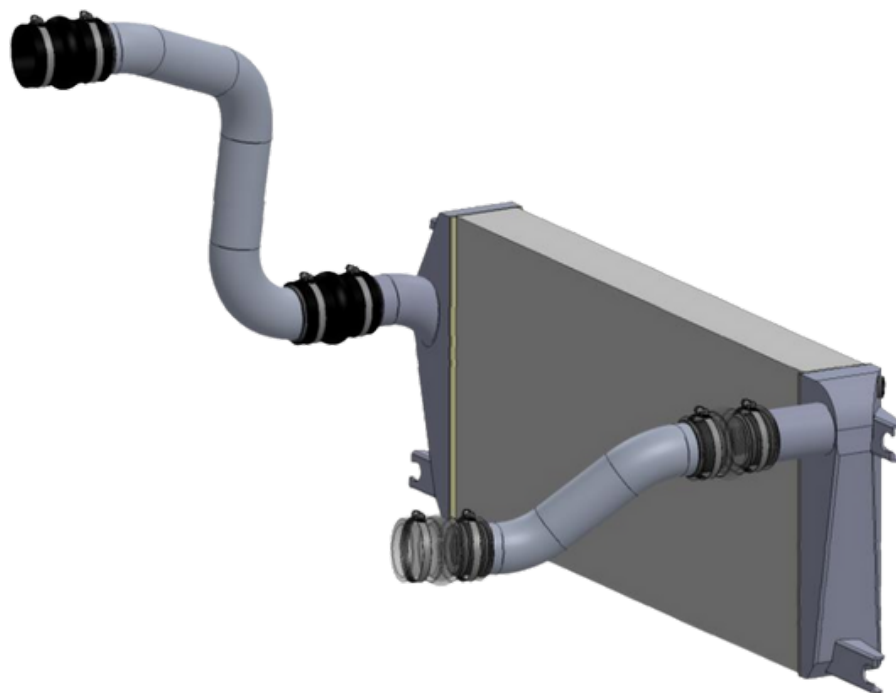
Loosen all 4 hose clamps on hot and cold side intercooler hoses. Remove top 2 x nuts and lower 2 x bolts on intercooler. The intercooler can now be removed. Remove hoses if hard pipe kit has also been purchased. Press out steel inserts before removing rubber bushes from OEM Intercooler to be reused

STEP 16



INSTALLING THE BIG BOY INTERCOOLER

PRODUCT CODE: CI-SETBT50-2



STEP 1

Insert rubber bushes inside provided spacer washers and slide into PWR Intercooler brackets. Press steel insert through bushes once in position as shown

STEP 2

Thread temperature sensor into intercooler and tighten

STEP 3

Cut off plastic from both upper driver side & passenger plastic ducts as indicated along the yellow line

STEP 4

On the lower plastic ducting, if the self adhesive foam is in good condition, it can be carefully peeled back and re-used against the new cut edge on the next step

STEP 1



STEP 3



INSTALLING THE BIG BOY INTERCOOLER

PRODUCT CODE: CI-SET1B150-2

STEP 5

On both sides of the lower ducting, mark out lines measuring down 155mm from the top. Continue this line at approx. 90° to the corner as shown below. Crossed out section is to be cut off and the self adhesive foam strip can be re-stuck down

STEP 5



STEP 6

Remove the bonnet latch sensor harness clip from the harness as shown. There isn't sufficient clearance with the harness clip attached to the bracket once the Intercooler is fitted. A zip tie is supplied to hold this wire in place upon reassembly

STEP 6



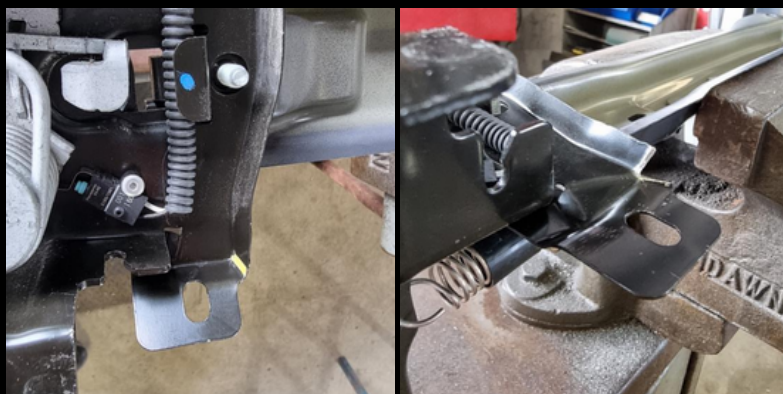
STEP 7

The harness bracket on the passenger side of the bonnet latch support needs to be bent to allow clearance. A small cut (indicated by yellow line) will allow this to bend flat as shown

STEP 6



STEP 7



INSTALLING THE BIG BOY INTERCOOLER

PRODUCT CODE: CI-SET1BT50-2

STEP 8

Assembly of the new Intercooler is essentially the reverse of disassembly noting that the lower brackets use the original bolts, but using previously unused threads in the radiator support panel.

STEP 8



STEP 9

Push silicone hoses onto all pipes ensuring that the hoses go all the way home against the stops of the billet outlets



STEP 10



STEP 10

Noting the orientation of the hose clamps, the hard pipe side of the silicone hose clamps can be pre-tightened to approx. 6Nm torque. Leave the other hose clamps loose

STEP 11

STEP 11

On the driver side, loosely fit the hot pipe onto the outlet of the turbo ensuring the other end is close to the opening through the radiator support panel.



INSTALLING THE BIG BOY INTERCOOLER

PRODUCT CODE: CI-SET1BT150-2

STEP 12

With Plastic engine cover removed, loosely fit the cold pipe onto the intake manifold of the engine with the other end close to the opening on the passenger side of the radiator support panel

STEP 13

Slide the intercooler into position onto the upper studs on the radiator support panel whilst ensuring that the silicone hoses are going onto the intercooler outlets on both sides, otherwise intercooler won't fully seat into its final position

STEP 14

Fit upper nuts and lower bolts to intercooler brackets and tighten ensuring intercooler is free of wiring looms and the bonnet cable and it is fully seated against the radiator support panel

STEP 15

Rock each hard pipe left to right until perfect alignment is achieved. There should be no gaps between the end of the silicone hoses and the seating edge of the billet outlets on the intercooler, intake manifold and turbo outlet. Tighten all hose clamps to approx. 6Nm torque.

STEP 16

Proceed to continue with reassembly of all of the OEM parts (Step# 17, working backwards)

STEP 17

Connect battery and confirm that all hoses, pipes, wires and panels are secure. Ensure that no tools or obstructions have been left under the bonnet and your Intercooler and pipe kit is now installed. Check all lights and sensors that may have been disconnected during the install are now fully functional

STEP 12



NOTES

PRODUCT CODE: CI-SETBT50-2



THANKS FOR JOINING THE #LEGENDEXNATION

If you're on Facebook or Instagram we would love to show off your vehicle on our page. Simply use the hashtag #legendexnation in a post with photos of your Legendex product and using the tags below and we will feature your vehicle. @legendex on Facebook and Instagram

