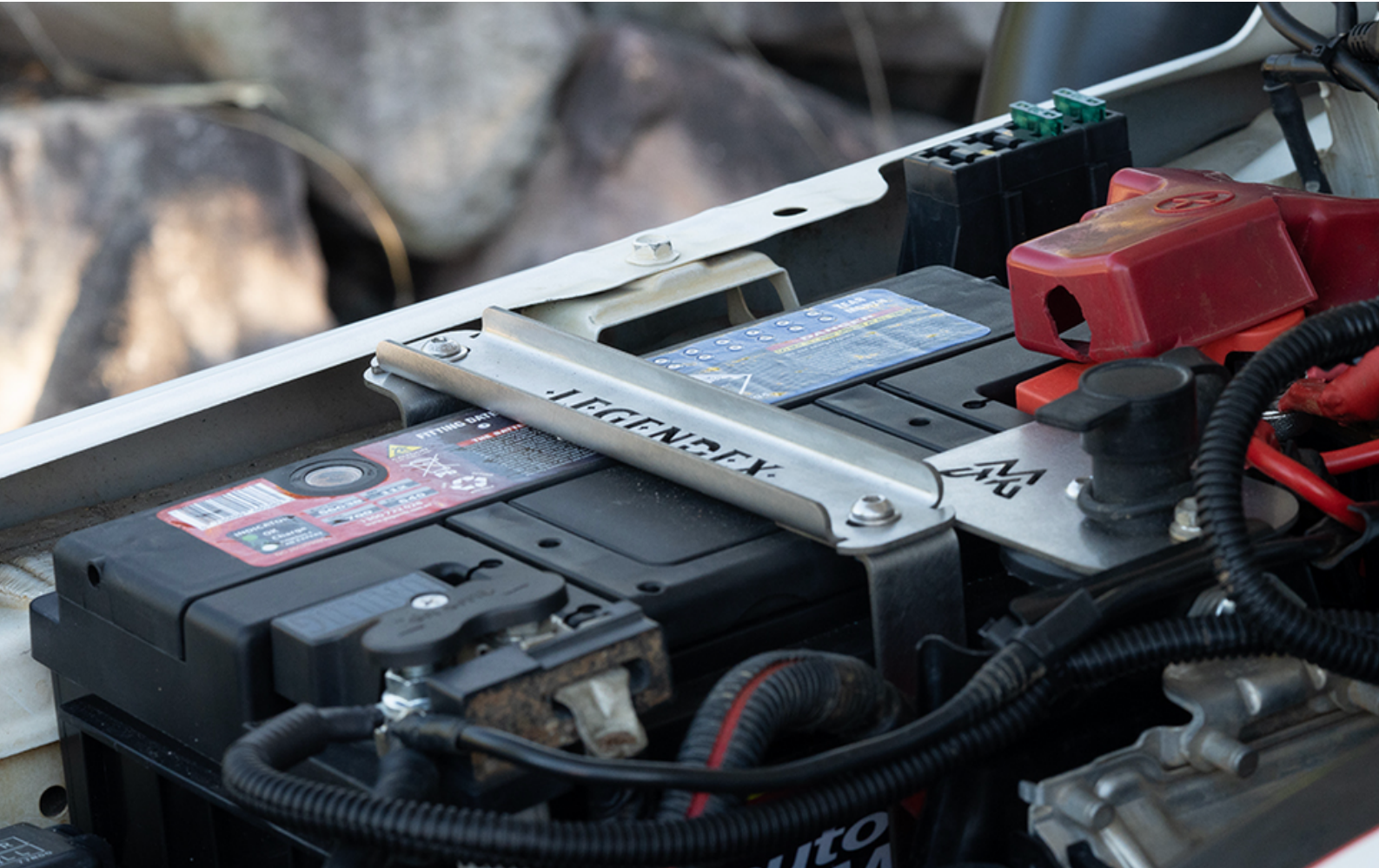




## **JB74 SUZUKI JIMNY UPGRADED BATTERY CRADLE TO SUIT**

PRODUCT CODE: MR-SETJNY-BT-1

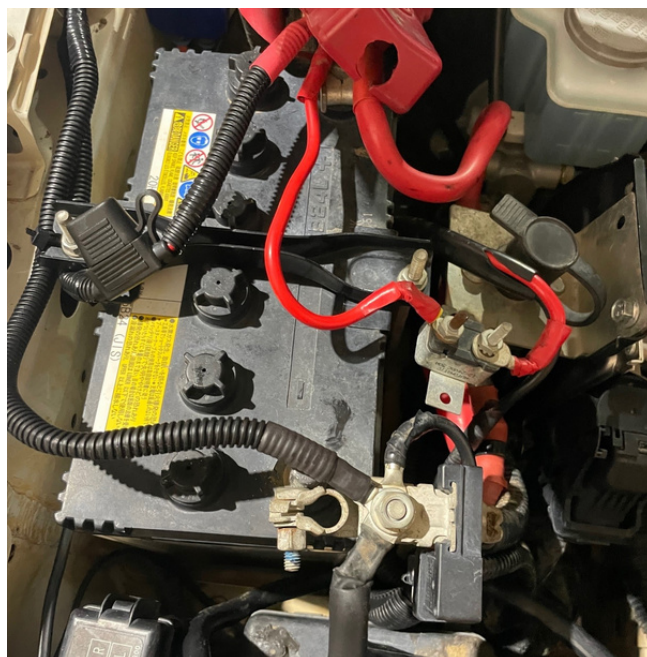
PRODUCT CODE: MR-SETJNY-BT-1



PRODUCT CODE: MR-SETJNY-BT-1

## INSTALLING YOUR NEW BULL BAR

1. Undo battery terminals and battery hold down clamp, be sure to remove the earth terminal first to isolate the battery and to prevent and accidental shorts while working in the compartment



2. With the battery out of the way give the cradle area a wipe out of dirt or dust. Remove the three nuts on the ECU bracket and the bolt on the earth lead show above.



3. Relocate the earth lead to the front ECU bracket, you will need to use this mount when re-assembling the ECU mount.



5. Place the Rogue M.O.L.L.E bracket into the cradle, to fit lift the ECU mounting bracket away from the studs and slider the Rogue MOLLE plate in place.



6. Loose Fit the rear nut onto the stud



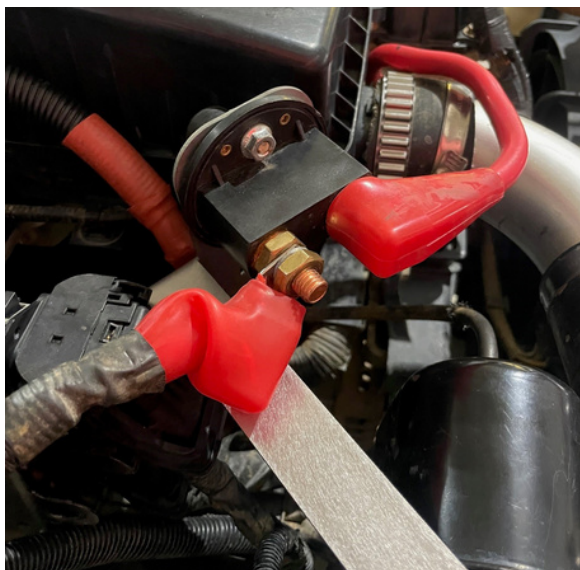
7. Relocate the earth lead to the front stud and loose fit the original nut



8. Drop in the side bracket aligning with the 6mm nutsert, this should be visible from the inner guard.



9. Optional, if upgrading for a winch fit the winch isolator to the inside bracket.



10. Loosen the isolator side bracket to check from cable clearance the remove to fit battery. Take this opportunity to tighten the front and rear nuts ready for battery to be fitted.



11. Fit Battery, then assemble side bracket and top mount.



# NOTES

---

---

---

---

---

---

---

---

---

---

---

---

---

---

---

---

---

---

---

---

---

---

---

---



## THANKS FOR JOINING THE LEGENDEXNATION

If you're on Facebook or Instagram we would love to show off your vehicle on our page. Simply use the hashtag #legendexnation in a post with photos of your Legendex product you can also tag us using the tags below and we will feature your vehicle.

@legendex on Facebook and Instagram