



LEGENDEX ROGUE MOLLE

PRODUCT CODE: MR-SET80-SLF

Rear shelf 80 series land cruiser

PRODUCT CODE: MR-SET80-SLF



LEGENDEX.COM.AU (07) 3203 2333

CHECK YOUR PACK LIST

Once you have unpacked the system from the box make sure you have all parts that are listed on the packing list below.

COMPONENTS

Rear shelf 80 series landcruiser

8 x M6 by 12 dome head bolt

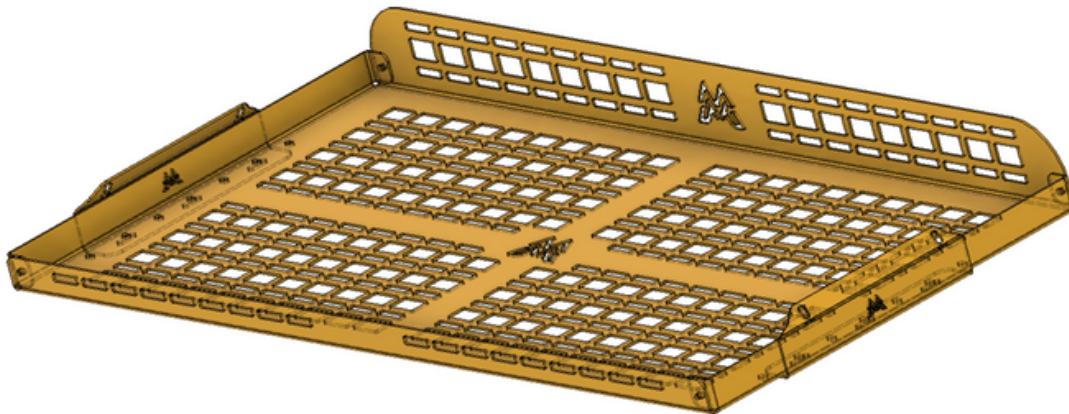
12 x M6 washer

4 x M6 by 20 dome head bolt

8 x M6 hex nut

2 x Aluminium shelf bracket

1 x Aluminium self



IMPORTANT

- Wear protective clothing including eye wear.
 - Clean Hands work best.
 - **Disconnect the Battery** to ensure you don't earth out or use an Auto-electrician.
-

INSTALLING YOUR NEW ROGUE M.O.L.L.E

PRODUCT CODE: MR-SET80-SLF

STEP 1

Start with double-checking all the correct components and gathering the tools required.

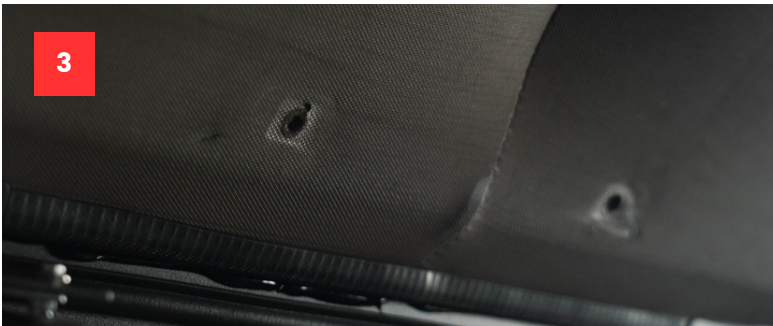
STEP 2

Remove the factory grab handle.



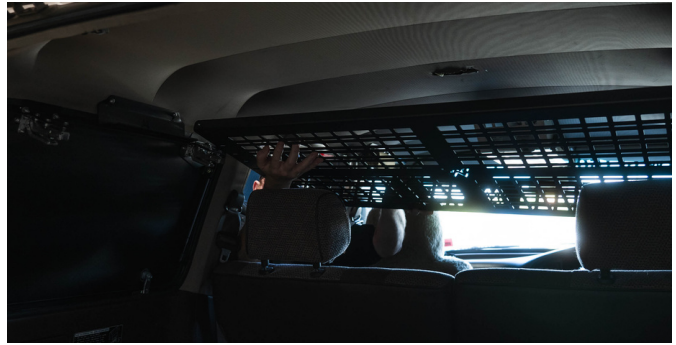
STEP 3

Loosely fit the shelf brackets using 2 M6 by 20 dome head bolts with washers. Repeat this on the other side of the vehicle.



STEP 4

Fit the shelf onto the brackets from the rear passenger seat. NOTE: The aluminium may have a slight warp to it. This is normal. The shelf will flatten once firmly bolted.



STEP 5

Loosely fit the corners of the shelf with the M6 by 12 bolts with washers and the M6 hex nuts.



STEP 6

Loosely install the remaining M6 by 12 bolts with the washers and the M6 hex nuts.



STEP 7

Check the shelf is in the correct position and tighten all the bolts. We recommend tightening the corner bolts last.



NOTES

PRODUCT CODE: MR-SETWRA-FT



THANKS FOR CHOOSING A LEGENDEX PRODUCT

Make sure to join " The Legendex Nation" Facebook group to show off your rig, share your knowledge and support other legends who share the same passion for getting off-road and exploring Australia.

Be sure to follow us on Instagram @legendex and use the #legendexnation hashtag on your post to be featured!

