



LEGENDEX ROCK SLIDERS

PRODUCT CODE: P-RS-MUX-1

Isuzu MUX wagon 2008-20

PRODUCT CODE: P-RS-MUX-1



CHECK YOUR PACK LIST

Once you have unpacked the system from the box make sure you have all parts that are listed on the packing list below.

COMPONENTS

SLIDER PASSENGER SIDE x 1

SLIDER DRIVERS SIDE x 1

BOLTS x 4

TOP PLATES x 4

TOOLS REQUIRED

- 19mm Spanners | Ratchet Spanner Ideal
- Bottle Jack | Trolley Jack Ideal
- Timber Block | Rubber Ideal
- Rubber Mallet
- 13mm Drill Bit + Drill
- Floor Mat
- Portable Light
- Flat Head Screwdriver | Large

IMPORTANT BEFORE INSTALLATION

- If you have had electrical work completed – please check chassis for existing wiring. You will not be able to install until this has been removed and re-wired.
- Before installing your sliders park your vehicle on level ground ensuring it is in gear (or Park) and the handbrake is applied. Never use a jack to support the weight of the vehicle while working on it.
- Wear protective clothing including eye wear

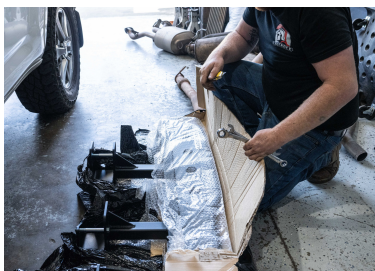
REMOVING ORIGINAL SIDE STEPS

- **BEFORE YOU START – DOUBLE CHECK** – that you have the correct sliders for the job.
- Check the invoice and the packaging.
- Remove packaging: Check you have all the correct parts and no damage from freight.
- You might need to wash the underbody before starting the job.
- Generously spray the bolts with WD40 (or other spray lube) and leave to penetrate.
- Each 4wd is different so you'll need to identify the correct spanner size
- Once removed – **KEEP** just in case.

INSTALLING YOUR NEW ROCK SLIDERS

STEP 1

Unpack and remove the bolts attached to the mounting points and put these side, align the slider with the body and chassis using a jack



STEP 2

Begin with the simplest side to handle: the Drive Side. Remove these factory bolts as depicted in the image



STEP 3

Position the slider using a jack or assistance from friends, and loosely bolt up the front bracket, ensuring it aligns with the holes.



INSTALLING YOUR NEW ROCK SLIDERS

PRODUCT CODE: P-RS-MUX-1

STEP 4

Position the center bracket in place and loosely bolt it.



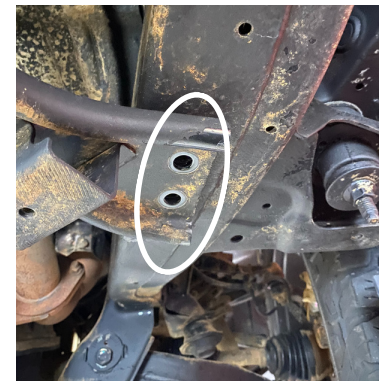
STEP 5

Next, position the final bracket to align with a hole in the chassis. You may need to utilize a rubber mallet to secure it in place. Now, tighten all the bolts securely on the driver side rock slider.



STEP 6

Remove these factory bolts as indicated in the image.



STEP 7

Align the slider and prepare to raise it to fit snugly against the chassis. You'll observe lines on the chassis where the bracket will slide underneath.

STEP 8

Loosely bolt the first bracket into place.

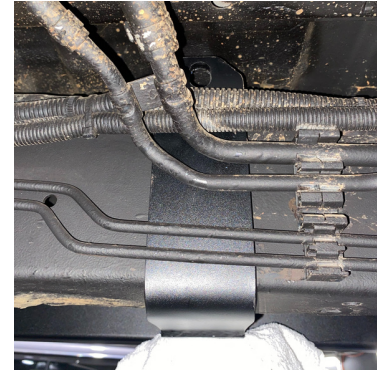


INSTALLING YOUR NEW ROCK SLIDERS

PRODUCT CODE: P-RS-MUX-1

STEP 9

Next, position the middle bracket in place and loosely bolt it up as well.



STEP 10

Next, position the final bracket to align with a hole in the chassis. You may need to utilize a rubber mallet to secure it in place. Now, tighten all the bolts securely on the passenger side rock slider.



FINAL NOTES ONCE SLIDERS ARE FITTED

NOW THAT THE SLIDERS ARE FITTED TO YOUR VEHICLE:

- Double check all nuts and bolts are tight.
- Start the vehicle and listen for any vibration / rattle noises.
- Check the tread plate bolts are tight as well.
- Also re-check tightness of the bolts after 20-50km

WASHING AND RE-CHECKING

- DO wash after use – using a hose – NOT high-pressure cleaner
- IF you have damaged your coating in use- a high-pressure cleaner can/ will get underneath and lift the coating.
- If you notice any damage to the coating – respray with paint or underbody spray
- After every 4wd trip—re-tighten the bolts.
- After every 4wd trip—check the alignment of the slider.

NOTES



THANKS FOR JOINING THE LEGENDEXNATION

If you're on Facebook or Instagram we would love to show off your vehicle on our page. Simply use the hashtag #legendexnation in a post with photos of your Legendex product you can also tag us using the tags below and we will feature your vehicle.

@legendex on Facebook and Instagram