



IC-SETHLX-1BK

TOYOTA HILUX 3LT D-4D 2006-2015

CHECK YOUR PACK LIST

Once you have unpacked the intercooler from the box make sure you have all parts that are listed on the packing list below.

<u>HILUX D4D</u>		
<u>QTY</u>	<u>PART</u>	<u>DESCRIPTION</u>
1	IC-HLX-1 BLACK	HILUX INTERCOOLER UNIT
6	IC-CLAMP40s30	CLAMP 57-79mm
1	IC-HLXBKT-1	"Z" BRACKET
1	IC-HLXBKT-2	WIRING HARNES BRACKET
1	IC-SHR225200	2" TO 2.25" SILICONE REDUCER
1	IC-HLXSIL-2	2.25" SILICONE 90*
1	IC-SHS250	2.5" SILICONE STRAIGHT
1	IC-HLXPIPE-1	2.25" ALUMINIUM 90*
1	CON-BOLT M8	M8x1.25x25mm BOLT
1	CON-NUT M8	M8x1.25mm NUT
1	CON-NUT M6	M6x1.0mm NUT
4	IC-SPACER-2	M8x3MM WASHER
1	ZIPTIE	

TOOLS REQUIRED:

Removal

- 1/4 or 3/8 inch drive ratchet
- 1/4 or 3/8 inch extensions
- Sockets and ring spanners 10mm and 12mm
- 22mm open ended spanner
- Philips head screwdriver
- Spray lube (e.g. WD40, Inox, Rust Off)
- Portable light

Installation

- 1/4 or 3/8 inch drive ratchet
- 1/4 or 3/8 inch extensions
- 10mm, 12mm and 13mm(1/2") socket
- 13mm and 22mm open ended spanner
- Spray lube (e.g. WD40, Inox, Rust Off)
- Portable light

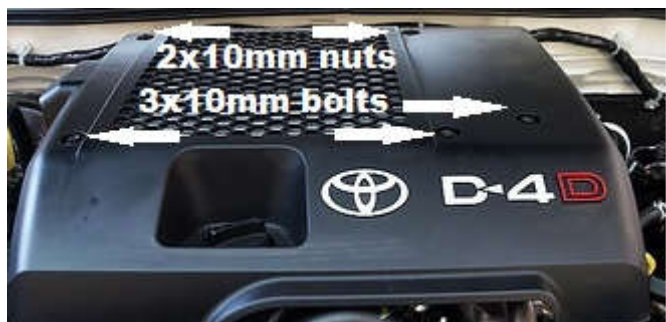


IMPORTANT:

- **Please READ fitting instructions first, and check you have the full contents before you start.**
- Take care when handling the intercooler as the fins can easily be damaged.
- Before installing your intercooler, park your vehicle on level ground ensuring it is in gear (or Park) and the handbrake is applied.
- Wear protective clothing including eye wear when installing the intercooler kit.
- Wait until the vehicle's engine has completely cooled BEFORE you begin to remove the existing intercooler.

Removing intercooler

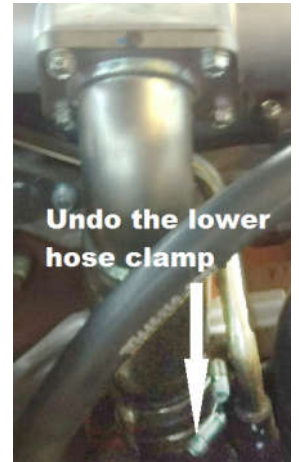
1. Once the engine is cold, remove the engine cover by removing the 3x10mm bolts and 2x10mm nuts.



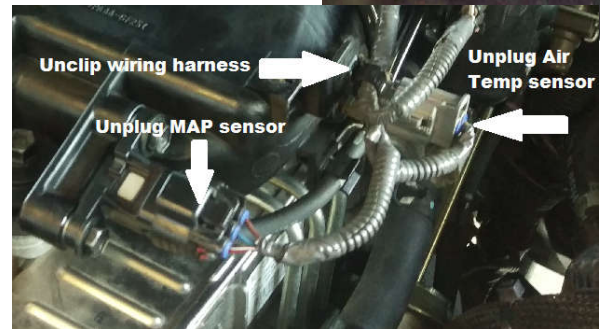
2. Once the engine cover is removed you can now undo the 4x 10mm bolts on the inlet side of the intercooler



3. With 10mm socket or a Phillips head screwdriver loosen the lower hose clamp that holds the rubber hose to the turbo. Now remove the pipe from the engine bay.



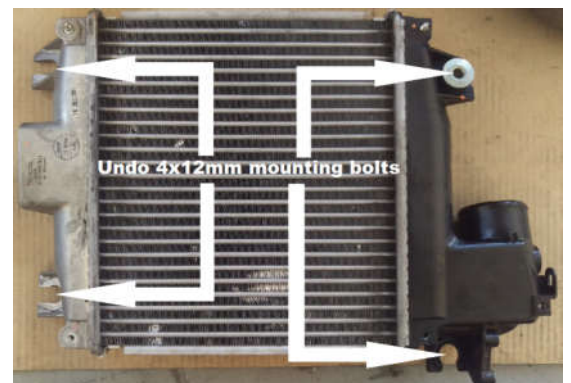
4. Now you can unplug the Air Temp sensor and MAP sensor and the vacuum line, also unclip the wiring harness clip from the intercooler. Leave the sensors attached to the intercooler until it is removed.



5. With 10mm socket or a Phillips head screwdriver loosen the hose clamp that holds the rubber hose to the throttle body.



6. With a 12mm ratchet undo the 4x intercooler mounting points. The intercooler can now be removed from the vehicle.



7. Once the intercooler is removed you can now remove the air temp sensor with a 22mm. Now undo the 2x 10mm bolts to remove the MAP sensor.

8. Remove the 4x rubber mounts from the intercooler. You may require some spray lube.

Installing Your Legendex Intercooler

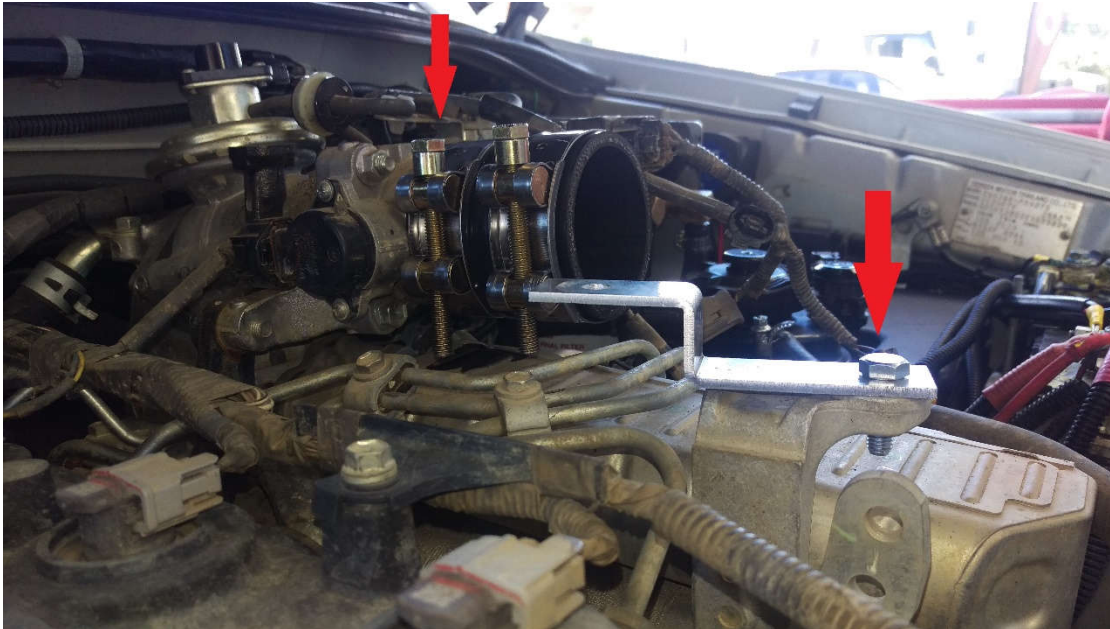
1. Now install the Air Temp Sensor and MAP sensors to the intercooler.
2. Remove the steel sleeve from the centre of the rubber mount. Does require spray lube.
3. Install the rubber mounts to your new Legendex intercooler. Now put the steel sleeve back in the centre of the rubber with the flat face to the bottom. Does require spray lube.



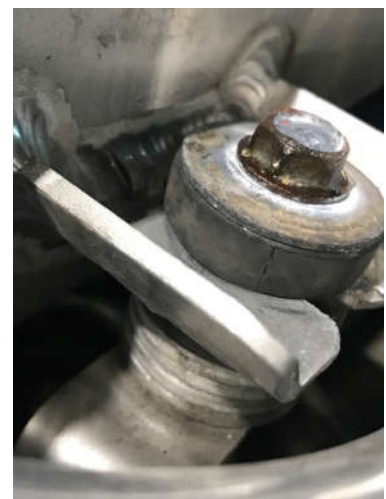
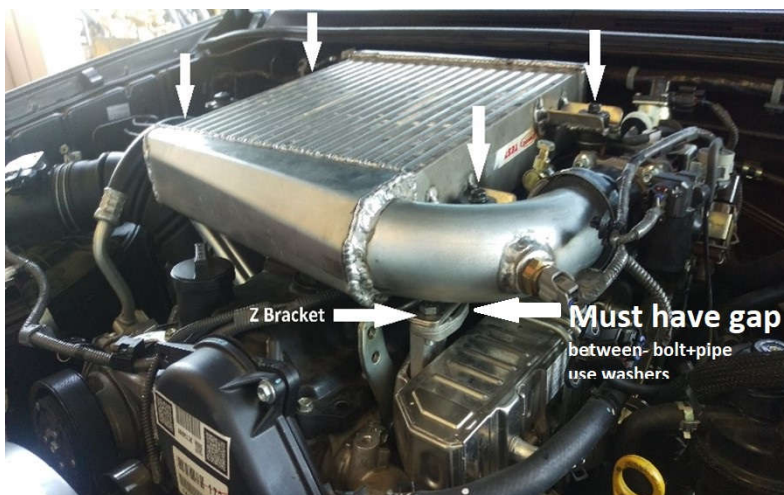
4. You will need to remove the white clip as pictured and attach the flat bracket (ic-HLXBKT-2) to the fire wall using the m6 nut provided. Next apply the zip tie through the two holes, this will make it easier later. Using the zip tie pull the wiring loom tight against the bracket. Trim the tail off the zip t



5. Install the 2.5" straight silicone hose(IC-SHS-250) and 2 of the clamps to the throttle body. Put the other 71-76mm clamp onto the silicone hose. **DO NOT TIGHTEN YET.**
6. Now you can install the "Z" bracket (IC-HLXBKT) to the front right intercooler mount using the m8x25mm bolt supplied. Point the bracket towards the rear of the vehicle. **DO NOT TIGHTEN YET.**



7. You can now install the intercooler by putting the pipe into the 2.5" silicone first. Some models may require the washers supplied to allow enough clearance for the 4th mount. Once in the correct position re-install using the 4x12mm bolts removed earlier. The fourth mount will require the m8 nut supplied. **DO NOT TIGHTEN**



8. Now the intercooler is sitting in the correct location you may now assemble to hot pipe (IC-HLXPIPE-1) the silicone reducer (IC-SHR225200) and the silicone 90(IC-HLXSIL-2). Put 2 of the Clamps the reducer to the shorter side of the hot pipe. The 90deg silicone to the longer side.



Install the reducer first
IC-SHR225200



9. Put the 62-65mm clamp on the smaller end of the reducer and the last 66-70mm clamp on the 90deg. You can now install this pipe it is easier to put it onto the turbo first the swing it into place on the intercooler inlet.
10. Now go through and tighten all the clamps making sure as you do them up they do not foul on any other parts of the engine. Once all the clamps and bolts are tight you can now plug back in the Air Temp sensor and MAP sensor and vacuum line.

Final checks once system is fitted

Now that your intercooler is fitted to the vehicle do a final check over of the system:

- Double check all nuts and bolts are tight.
- You may now start the vehicle and run at idle for a couple of minutes.
- Listen for any air leaks.
- Now the vehicle is ready for a test drive. Once returning from test drive and vehicle has cooled check all clamps, nuts and bolts, as some may need re- tightening.
- Also re-check tightness of the clamps, nuts and bolts after 20-50km