



IC-SETHLX-3BK

TOYOTA HILUX 3LT D-4D 2005-2006 no egr

CHECK YOUR PACK LIST

Once you have unpacked the intercooler from the box make sure you have all parts that are listed on the packing list below.

<u>HILUX D4D</u>		
<u>QTY</u>	<u>PART</u>	<u>DESCRIPTION</u>
1	IC-HLX-1 BLACK	HILUX INTERCOOLER UNIT
6	IC-CLAMP40s30	CLAMP 57-79mm
1	IC-HLXBKT-2	WIRING HARNES BRACKET
1	IC-HLXBKT-3	Drivers side Front Bracket
1	IC-HLXBKT-4	Drivers side Rear Bracket
1	IC-HLXBKT-5	Passenger side Bracket
1	IC-SHR225200	2" TO 2.25" SILICONE REDUCER
1	IC-HLXSIL-2	2.25" SILICONE 90*
1	IC-SHS250	2.5" SILICONE STRAIGHT
1	IC-HLXPIPE-1	2.25" ALUMINIUM 90*
1	CON-BOLT M8	M8x1.25x25mm BOLT
1	CON-NUT M8	M8x1.25mm NUT
1	CON-NUT M6	M6x1.0mm NUT
4	IC-SPACER-2	M8x3MM WASHER
1	ZIPTIE	

TOOLS REQUIRED:

Removal

- 1/4 or 3/8 inch drive ratchet
- 1/4 or 3/8 inch extensions
- Sockets and ring spanners 10mm and 12mm
- 22mm open ended spanner
- Philips head screwdriver
- Spray lube (e.g. WD40, Inox, Rust Off)
- Portable light

Installation

- 1/4 or 3/8 inch drive ratchet
- 1/4 or 3/8 inch extensions
- 10mm, 12mm and 13mm(1/2") socket
- 13mm and 22mm open ended spanner
- Spray lube (e.g. WD40, Inox, Rust Off)
- Portable light



IMPORTANT:

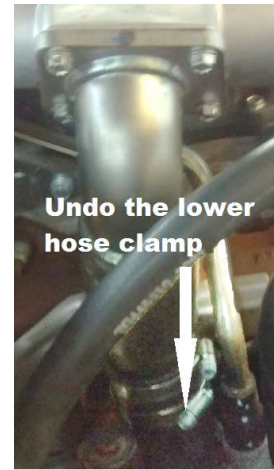
- **Please READ fitting instructions first, and check you have the full contents before you start.**
- Take care when handling the intercooler as the fins can easily be damaged.
- Before installing your intercooler, park your vehicle on level ground ensuring it is in gear (or Park) and the handbrake is applied.
- Wear protective clothing including eye wear when installing the intercooler kit.
- Wait until the vehicle's engine has completely cooled BEFORE you begin to remove the existing intercooler.

Removing intercooler

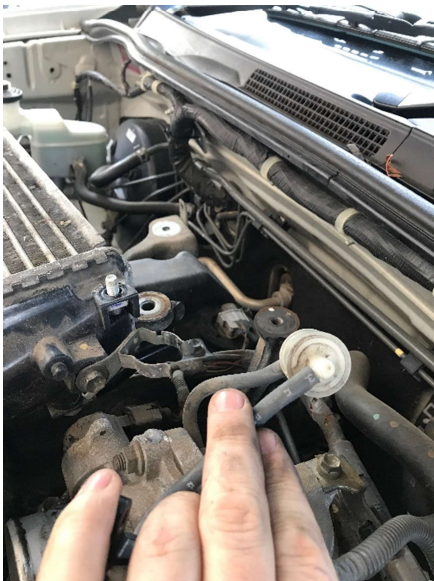
1. Once the engine is cold, remove the engine cover by removing the 3x10mm bolts and 2x10mm nuts.



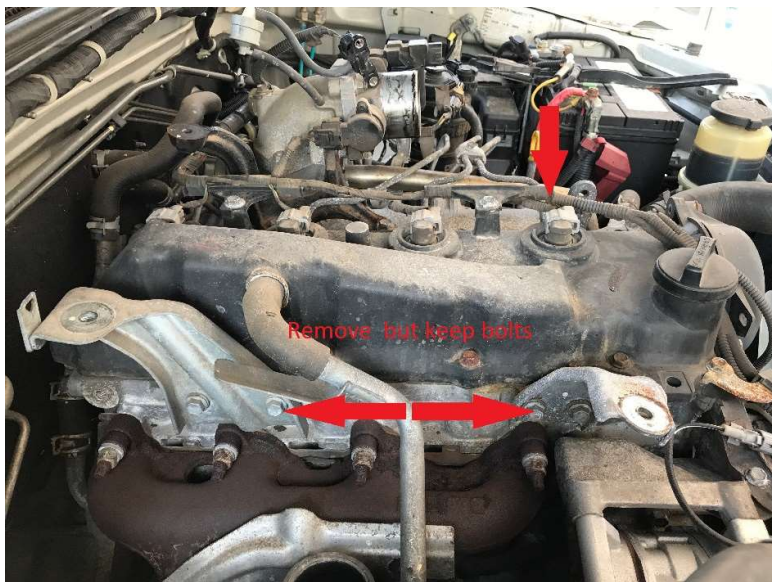
2. With 10mm socket or a Phillips head screwdriver loosen the lower hose clamp that holds the rubber hose to the turbo. Now remove the pipe from the engine bay.



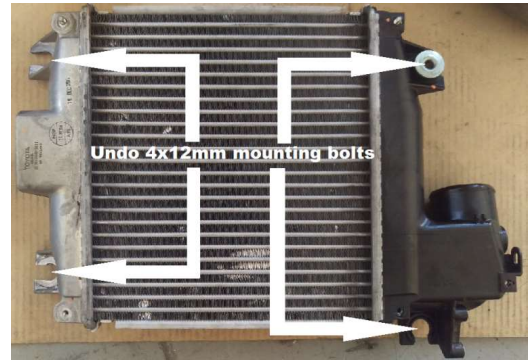
3. Unclip White actuator then remove Map and O2 Sensor. **"Careful not to lose the Sensor Gasket"**



4. Remove the x3 standard intercooler mount brackets, and keep all the bolt to reuse.



5. Remove the 4x rubber mounts from the intercooler. You may require some spray lube.



6. Now remove the clip mount from the intercooler, and flatten out the curve, so that the base is flat.
7. Now bolt to the back of the intake mount

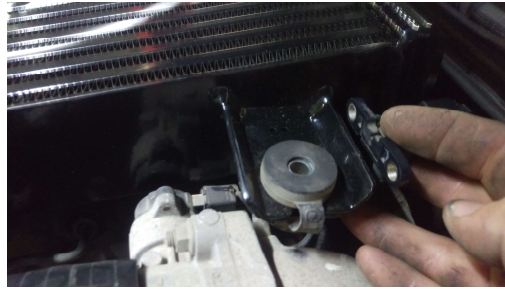


8. Now unclip the wiring and pull the wires from around the back as forward as possible.



Installing Your Legendex Intercooler

1. Now install the Air Temp Sensor and MAP sensors to the intercooler.
2. Remove the steel sleeve from the centre of the rubber mount. Does require spray lube.
3. Install the rubber mounts to your new Legendex intercooler. Now put the steel sleeve back in the centre of the rubber with the flat face to the bottom. Does require spray lube.



4. You will need to remove the white clip as pictured and attach the flat bracket (ic-HLXBKT-2) to the fire wall using the m6 nut provided. Next apply the zip tie through the two holes, this will make it easier later. Using the zip tie pull the wiring loom tight against the bracket. Trim the tail off the zip t



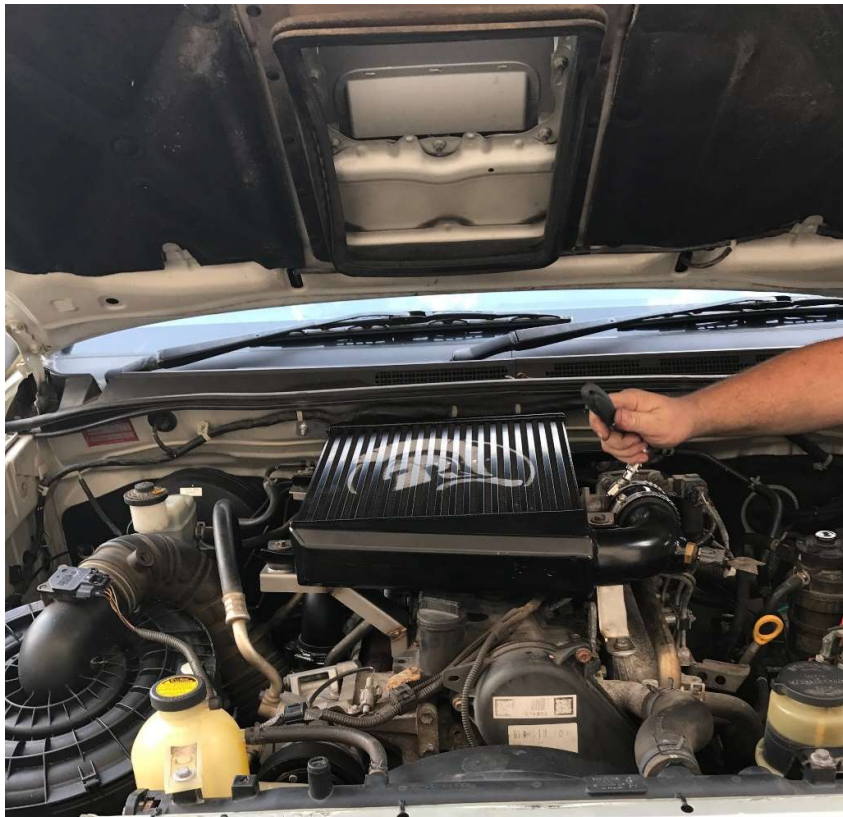
5. Install the 2.5" straight silicone hose(IC-SHS-250) and 2 of the clamps to the throttle body. Put the other 71-76mm clamp onto the silicone hose. **DO NOT TIGHTEN YET.**



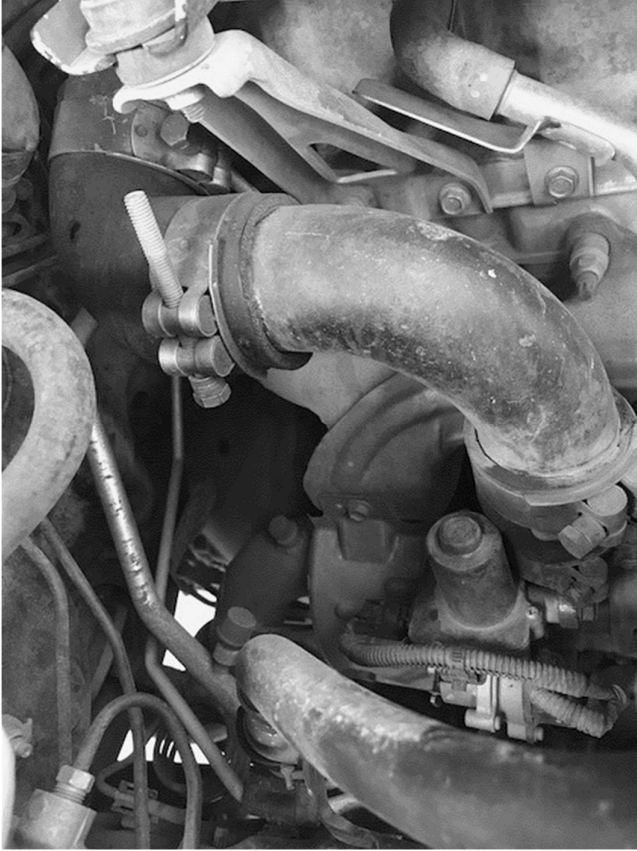
6. Now you can install the 3 brackets to the motor finger tight. **DO NOT TIGHTEN YET.** It can take a while to correctly A-line the intercooler



7. You can now install the intercooler by putting the pipe into the 2.5" silicone first. Some models may require the washers supplied to allow enough clearance . **DO NOT TIGHTEN**



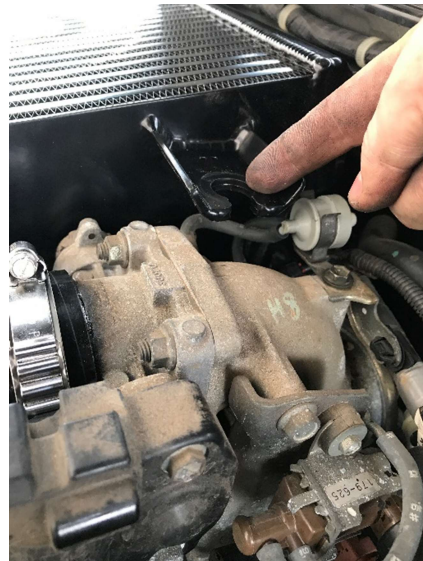
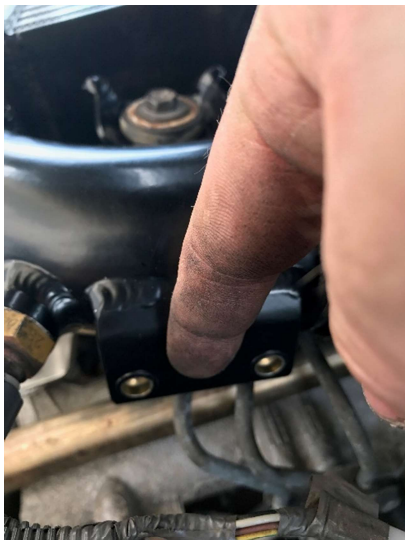
- Now the intercooler is sitting in the correct location you may now assemble to hot pipe (IC-HLXPIPE-1) the silicone reducer (IC-SHR225200) and the silicone 90(IC-HLXSIL-2). Put 2 of the Clamps the reducer to the shorter side of the hot pipe. The 90deg silicone to the longer side.
- Put the 62-65mm clamp on the smaller end of the reducer and the last clamp on the 90deg. You can now install this pipe it is easier to put it onto the turbo first the swing it into place on the intercooler inlet.



Install the reducer first
IC-SHR225200



- There are two part that are now used, on this Core that are used on the Newer model. One this this twin bolt mount, the other is the rear passenger hanger.



11. Now plug back in the Air Temp sensor and MAP sensor and vacuum line. This can be tight, so be careful and take your time. Therefore, earlier we cut the clip, and full the wiring from the back forward.



12. Now go through and tighten all the clamps making sure as you do them up they do not foul on any other parts of the engine.

Final checks once system is fitted

Now that your intercooler is fitted to the vehicle do a final check over of the system:

- Double check all nuts and bolts are tight.
- You may now start the vehicle and run at idle for a couple of minutes.
- Listen for any air leaks.
- Now the vehicle is ready for a test drive. Once returning from test drive and vehicle has cooled check all clamps, nuts and bolts, as some may need re-tightening.
- Also re-check tightness of the clamps, nuts and bolts after 20-50km