



LEGENDEX ROGUE M.O.L.L.E

PRODUCT CODE: MR-COL-R-2-KIT

Holden Colorado 2012-2020 Roof Console Kit

PRODUCT CODE: MR-COL-R-2-KIT



CHECK YOUR PACK LIST

Once you have unpacked the system from the box make sure you have all parts that are listed on the packing list below.

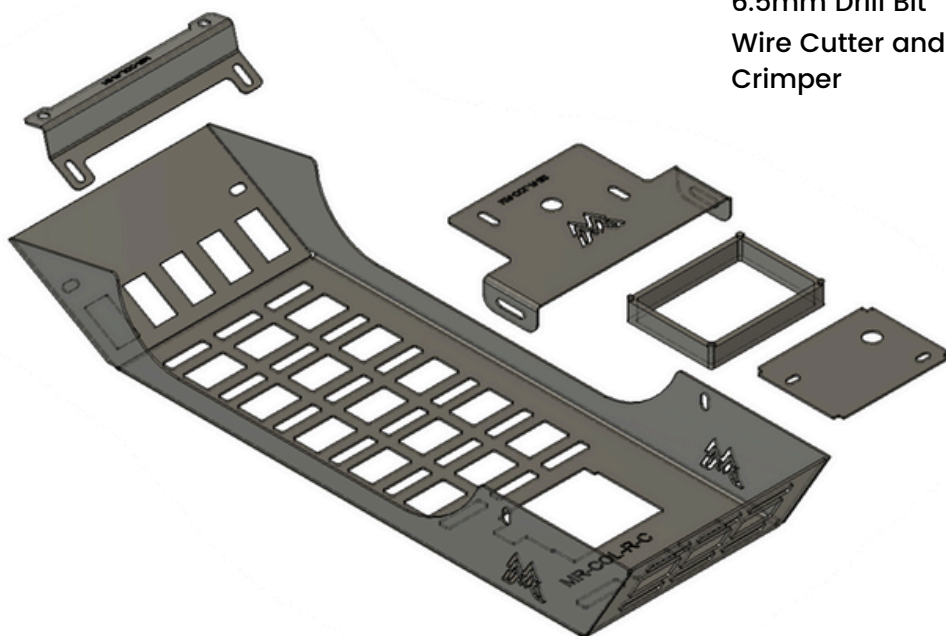
COMPONENTS

MR-COL-B	ROOF CONSOLE	1
MR-COL-B1	FRONT BRACKET	1
MR-COL-B2	REAR BRACKET	1
Interior Light Box		1
Interior Light Box Lid		1
BOLT	M4 – 30mm Phillips Head	2
BOLT	M6 – 12mm Dome Head	8

NUT	M6 Hex Flange Nut Serrated	8
NUT	M4 Hex Flange Nut Serrated	2
WASHER	M4 9mm	4
TERMINAL	4.3mm Ring Terminal	4
CABLE	Red Cable Joiner	4
CABLE	700mm 3 Core 3mm	1

TOOLS REQUIRED

- 4mm Allen Key
- Phillips Head No2 Screw Driver
- 6.5mm Drill Bit
- Wire Cutter and Stripper
- Crimper



IMPORTANT

- Wear protective clothing including eye wear.
- Clean Hands work best.
- Disconnect the Battery to ensure you don't earth out. Or Use an Auto-electrician.

INSTALLING YOUR NEW ROGUE M.O.L.L.E

PRODUCT CODE: MR-COL-R-2-KIT

STEP 1

Start with double-checking all the correct components and gathering the tools required.

STEP 2

First, Remove Front Interior light



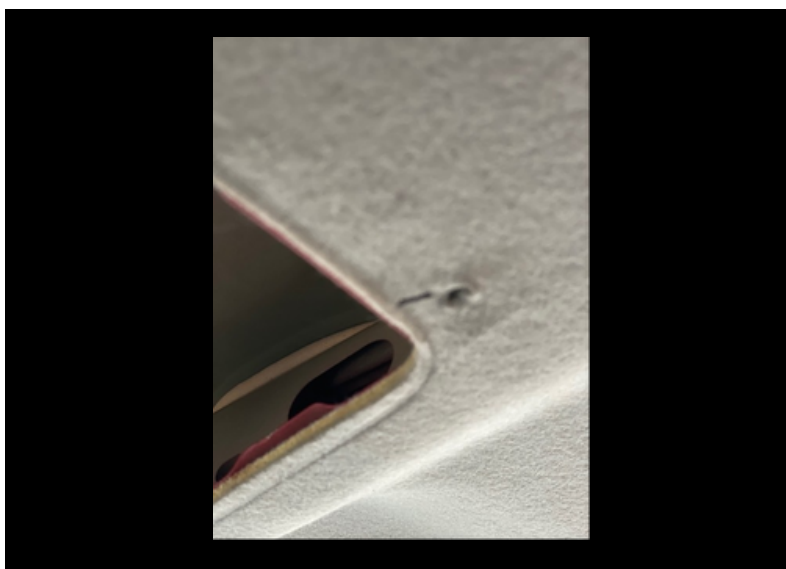
STEP 3

Place front bracket central to the interior light and mark hole position on the interior hood lining



STEP 4

Carefully drill through the hood lining and thin metal skin with a 6.5mm drill bit



INSTALLING YOUR NEW ROGUE M.O.L.L.E

PRODUCT CODE: MR-COL-R-2-KIT

STEP 5

Use the 6mm bolts and nuts to fit the front bracket to the roof



STEP 6

Once the front bracket is fitted to you can re-install the interior light making sure the bracket is as close as possible to the edge of the interior light.



STEP 7

Remove the rear interior light cover



INSTALLING YOUR NEW ROGUE M.O.L.L.E

PRODUCT CODE: MR-COL-R-2-KIT

STEP 8

Remove the interior light by unscrewing the bolts.



STEP 9

Carefully unplug the interior light from wiring harness



STEP 10

Install rear bracket with the mounting screws supplied, be sure to poke the extended wiring harness through the bracket



INSTALLING YOUR NEW ROGUE M.O.L.L.E

PRODUCT CODE: MR-COL-R-2-KIT

STEP 11

To fit the interior light the factory plug needs to be cut and extended.

To complete this job in your pack you should have:

3mm Three Core cable 500mm

Red Cable Joiners (you can solder join if preferred)

Res Eyelet Terminals

NB: Before starting this section ensure you battery is disconnected

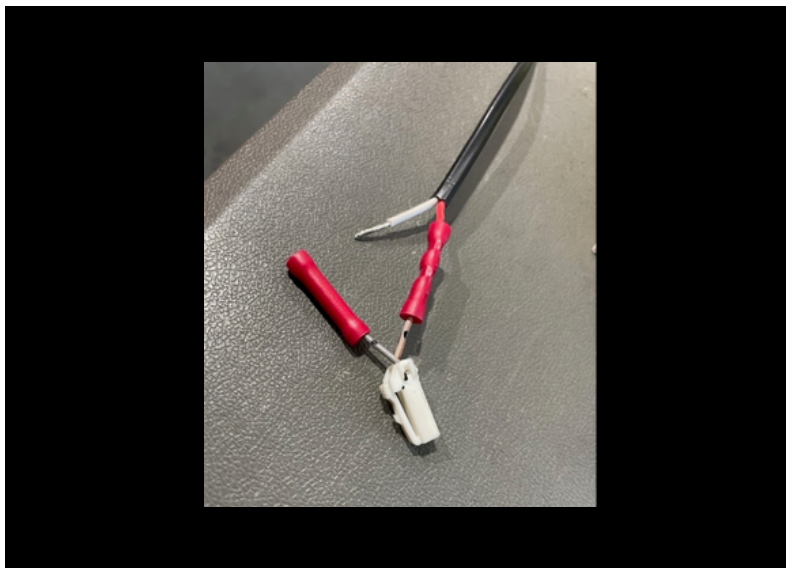


STEP 12

Cut factory plug (one wire at a time) from wiring harness. Be sure to leave enough cable at both ends for the joiners.

Split the 3 core cable and strip the ends. You will need to match colour of 2 wires from one end to the other when adding the plug.

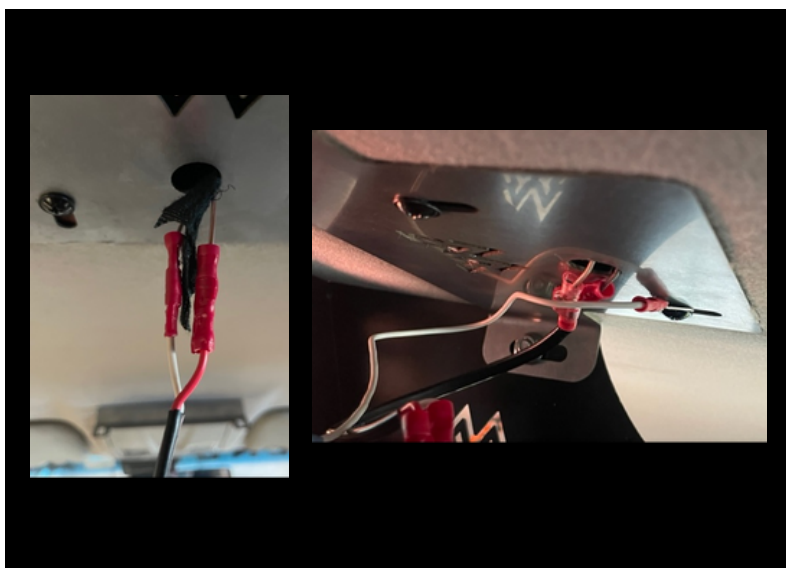
For the third wire crimp one of 4.2mm Eyelets at either end for the earth cable



STEP 13

Using the red Joiners match the same wires from the plug end. Please ensure the same wire is matched at both ends or you have an electrical short.

Add the eyelet of one end to the screws when fitting the top bracket.



INSTALLING YOUR NEW ROGUE M.O.L.L.E

PRODUCT CODE: MR-COL-R-2-KIT

STEP 14

To fit the interior light the factory plug needs to be cut and extended.

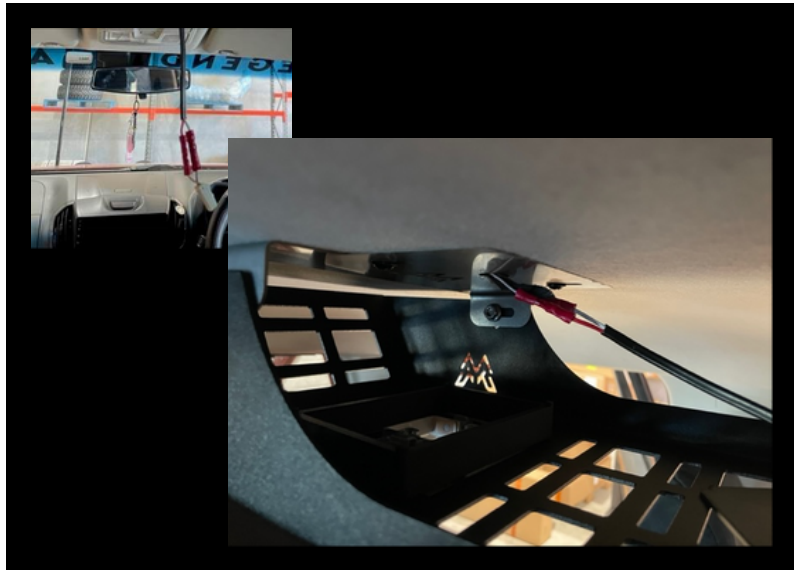
To complete this job in your pack you should have:

3mm Three Core cable 500mm

Red Cable Joiners (you can solder join if preferred)

Res Eyelet Terminals

NB: Before starting this section ensure you battery is disconnected



STEP 15

Feed the extended cable through the aluminium plate and spacer box, Plug the extended harness into the interior light and fit the factory interior light (we recommend a little masking tape to hold the light inplace while doing the next steps.)



STEP 16

Fix the interior light to the mounting mounting plate using the M4X30mm bolts and washer

Fit the third cable with eyelet to mounting screw close to the cable hole. Once the interior light is secure you can finished tightening the roof console bolts.



INSTALLING YOUR NEW ROGUE M.O.L.L.E

PRODUCT CODE: MR-COL-R-2-KIT

STEP 17

Plug the harness back into interior light and loosely fit the rear bracket to the body of the console

NB: some vehicle may require the harness to be extended to reach the new interior light location



STEP 18

Loosely fit the body the front bracket



STEP 19

Align the body to the desired height from the roof lining and tighten all bolts.

Refit battery cable and test interior light function



