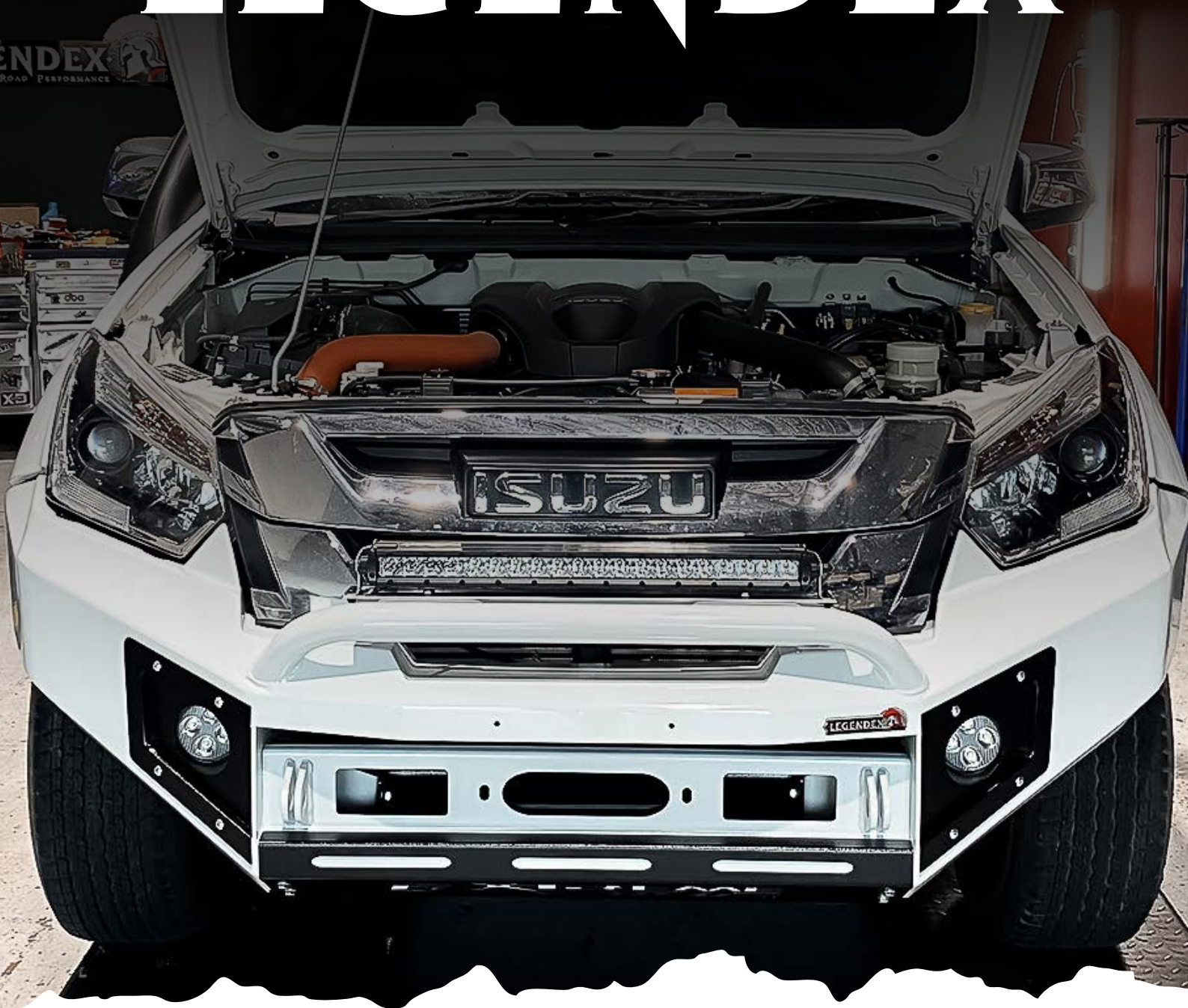


BULL BAR RANGE

◆ LEGENDEX ◆



FITTING INSTRUCTIONS

DMAX 2017

legendex.com.au | (07) 3203 2333 | sales@legendex.com.au

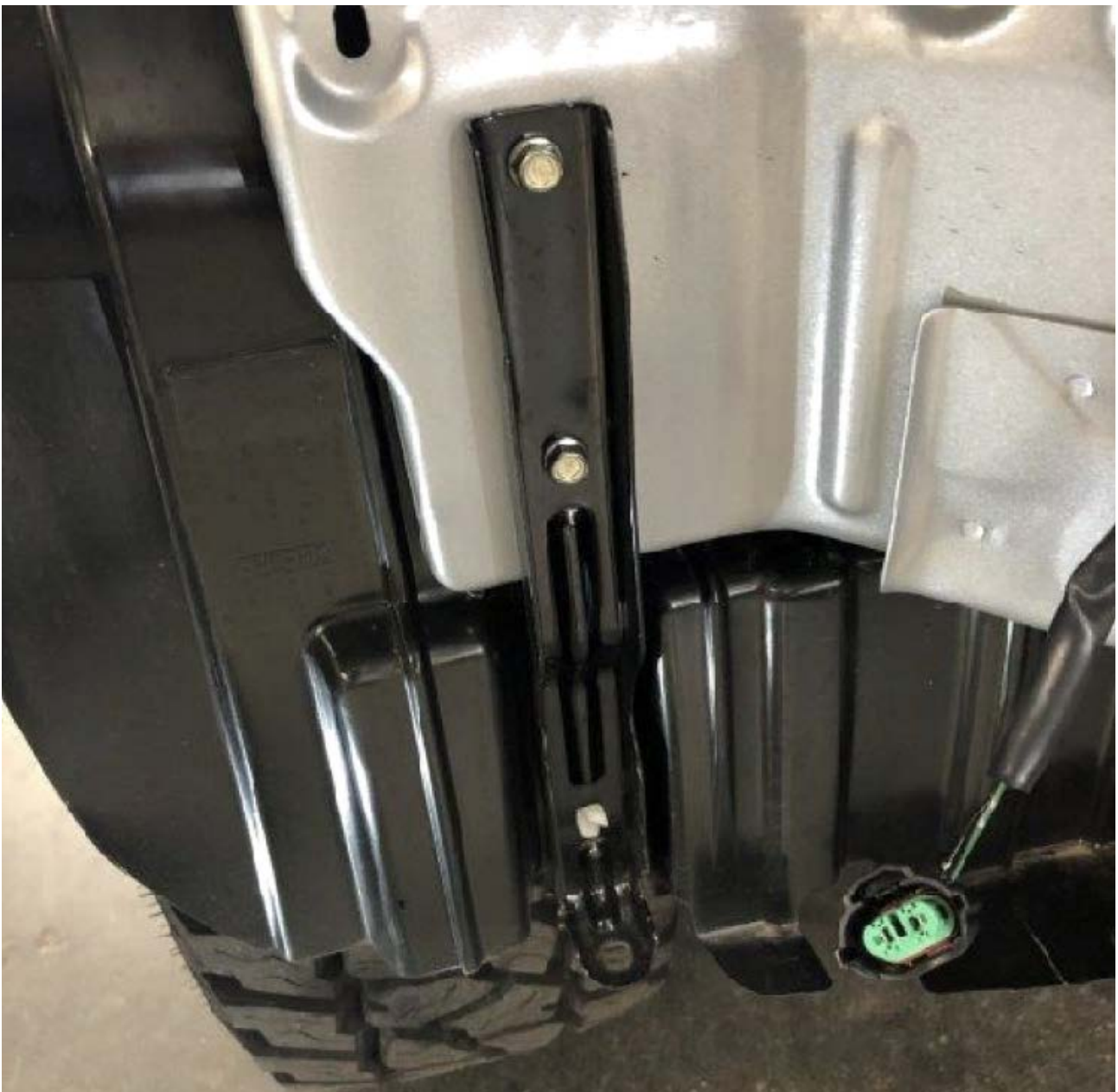
FITTING INSTRUCTIONS

Install notes: Dmax 2017 on has softer body mounts than other cars, movement between the Chassis and body can be anywhere from 15–20mm. We recommend a minimum 10–15mm gap and the use of pinch weld (not supplied).

Dmax 2017 will also require Slight Grille Trim in order to get bar close to car.

1. Remove number plate and grill.
2. Remove 4 clips on centre upper bull bar.
3. Remove clips under wheel arch that attach to bull bar.
4. Remove clips and screws under bull bar.
5. Remove small bash plate.
6. Gently pull at edge of bumper to release bumper from under head lights.
7. Remove bumper and disconnect fog light from loom.
8. Remove white plastics from edge of body next to guard.
9. Remove front lower chassis support bar.
10. Remove inner guard metal brackets.
11. Remove metal bracket from front chassis.
12. Remove upper bumper support bar (be careful of all sensors) keep aside.
13. Install winch cradle making sure it is central along with chassis support collar.
14. Drill out 4 spot welds from previously removed upper support bar (see picture).
15. Paint and reassembled with 10mm bolts as shown in picture.
16. Install grill support and clip in sensor.
17. Fit bull bar and tighten – see final images last pages.
18. Refit grill and number plate.
19. Fit bash plate.
20. Wiring in fog lights and tighten & Trim inner guards to suit.

FITTING INSTRUCTIONS



FITTING INSTRUCTIONS



If you need further adjustment left to right you may need to flatten the bump on the chassis front member & install the Chassis collar bracket.

FITTING INSTRUCTIONS



We recommend the use of 10mm foam on the sides between the bar and the car to help get the bar even.

FITTING INSTRUCTIONS



Typically, we cut the grille and apply some flat style pinch weld to get the bar nice and close to the car.



FITTING INSTRUCTIONS



We recommend rubber pinch weld available on our store for \$29 or Clark Rubber to provide infill between bulbar and guards/headlights.

WORK NOTES



FITTING INSTRUCTIONS

DMAX 2017

legendex.com.au | (07) 3203 2333 | sales@legendex.com.au