

BULL BAR RANGE

◆ **LEGENDEX** ◆



FITTING INSTRUCTIONS

2021+ NISSAN NAVARA

sales@legendex.com.au | (07) 3203 2333 | legendex.com.au

FITTING INSTRUCTIONS

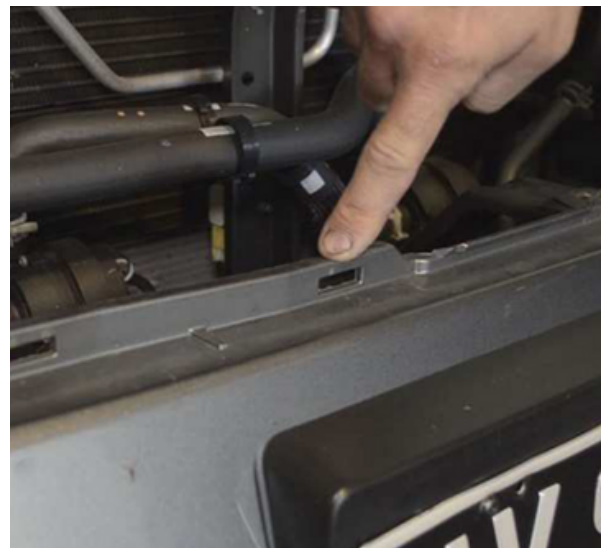
- 1** Unwrap the bullbar carefully to avoid sharp objects damaging paint, carefully inspect the bar for any damage caused in transit, We will not accept any damage claim once installation has begun, its best the lay bullbar on a stand or soft surface. Unbolt the cradle from the bullbar



- 2** "CAUTION: The NP300 features delicate tabs securing the grill in place. Avoid pulling or twisting them. Instead, gently press them to allow the clip to flatten, enabling you to smoothly pull it through its holder.



- 3** Pull the grill away, pushing the clips where it attaches to the bumper.



FITTING INSTRUCTIONS

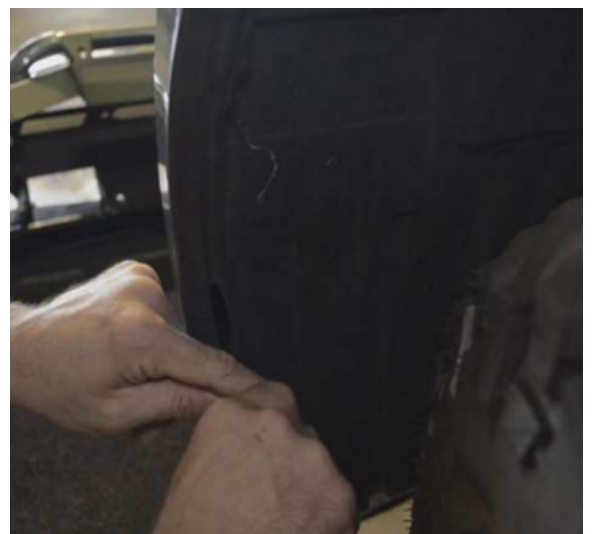
- 4** Unscrew the top of the bumper.



- 5** Undo the bolts holding the lower part of the bumper as shown



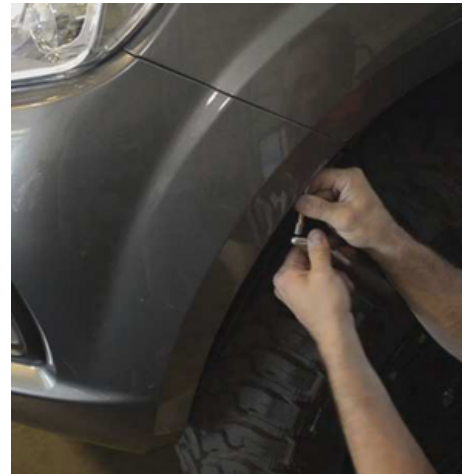
- 6** Remove the clips holding the inner wheel liner to the bumper



FITTING INSTRUCTIONS

7

Pull away the wheel liner to unbolt the bumper from the front quarter panels



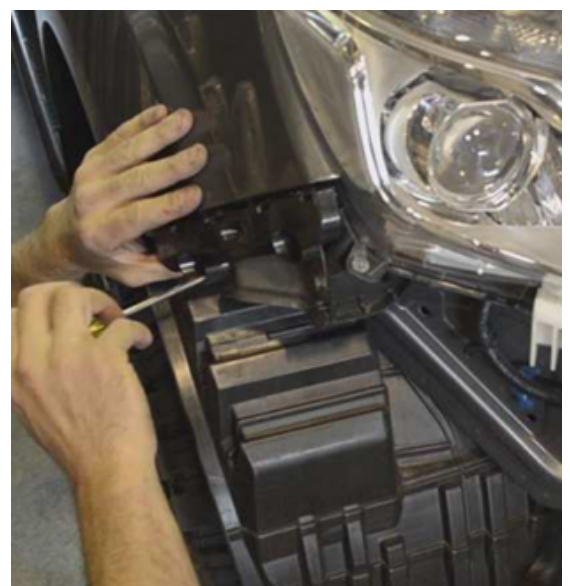
8

Gently detach the bumper from the wheel arches, and you should be able to remove it entirely. Remember to proceed with caution and disconnect the fog light wiring.



9

Remove the plastic white mouldings underneath the headlights. & side mouldings



FITTING INSTRUCTIONS

10

Unbolt and remove the front impact bar. & lower air dams



11

There are some hard to find clips that can be popped off with a flat head to remove the rest of the lower air dam



12

Remove the two curved metal brackets, these will foul on the bar bracket if not removed



FITTING INSTRUCTIONS

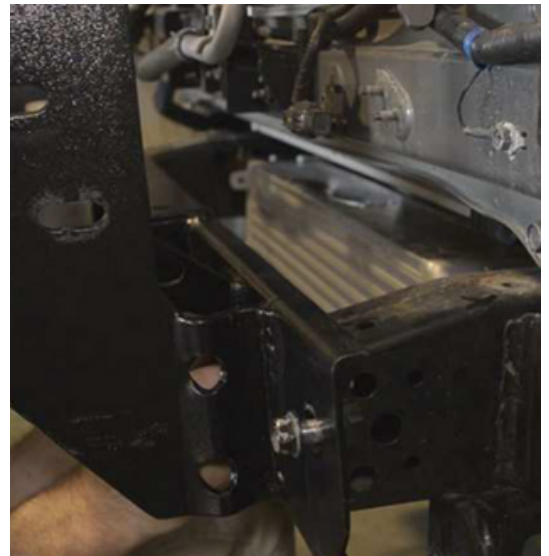
13

Mark and trim the factory air dams as shown.



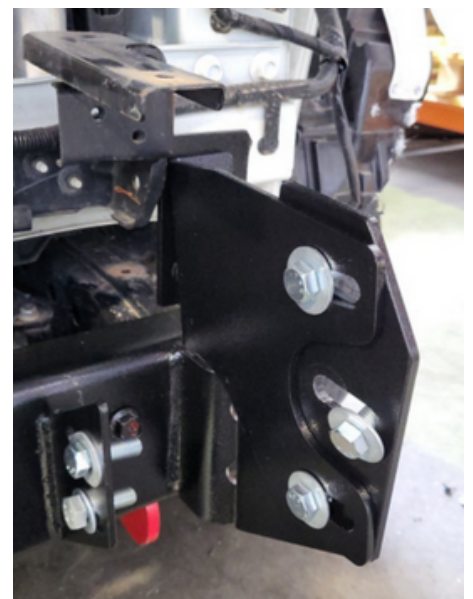
14

Install the recovery points before you fit and bolt up the bar cradle using the factory bolts.



15

Make up the support bracket and fit it to the chassis as shown. See the second photo to ensure that the support brackets are fitted correctly



FITTING INSTRUCTIONS

16

Trim and secure the inner wheel liner. You may wish to fit bar mark remove and cut to follow the contour of the side wings.

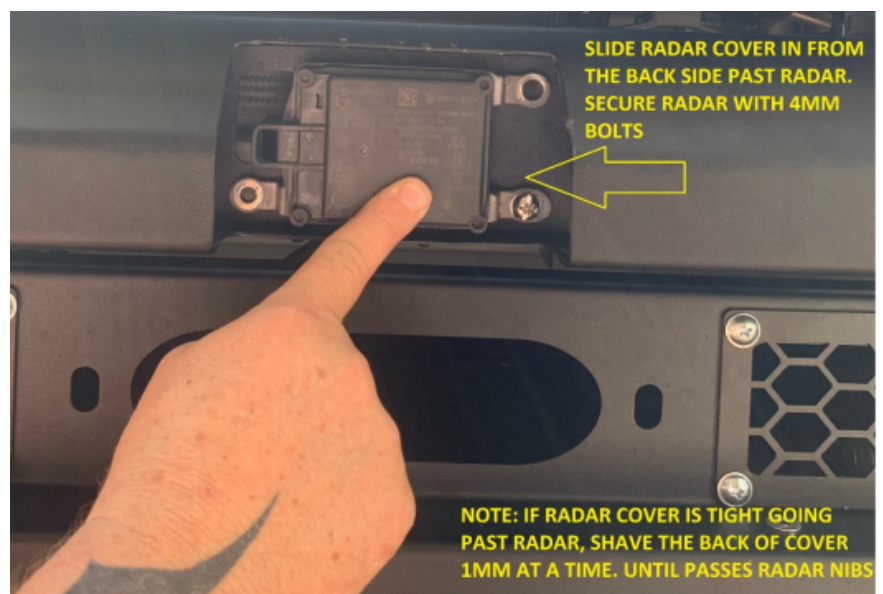


Installing a winch: You are required to remove brackets holding already relocated Radar, you can install winch control box as shown on the grill outer tabs



17

Install the recovery points before you fit and bolt up the bar cradle using the factory bolts.



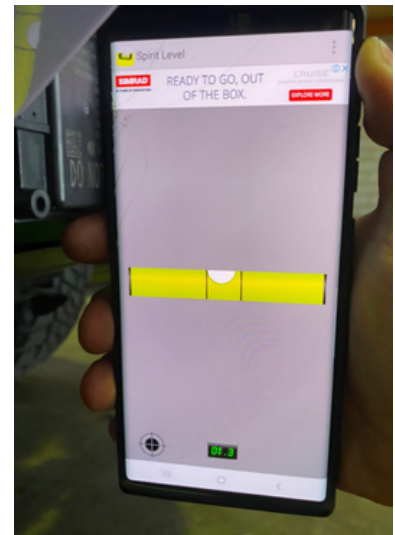
FITTING INSTRUCTIONS

18

Ensure there is a proper gap between the bull bar and the guards/headlights. The bar should maintain a minimum gap of 10-15mm. Pay attention to the plastic bulge located under the corner of the headlight; the bar should be positioned in front of this to prevent any upward or downward movement that could potentially damage the headlight

19

Once you have finished the alignment of the bullbar you must check the radar level. Download spirt level app on your phone which will give you degree in value. See the image, must be between 0-2degree. We recommend 1.5degree down



20

The radar cover is tight fit, first check to see if you can clear the corners of the radar with cover by sliding in from the back, if you can not check you are using 4mm bolts to ensure radar is sitting low as possible. In some installs you are required to trim the back of the cover to allow it pass over the radar. Its designed tight so once in place its locked in, if you wish you can apply a couple drops super glue if you find radar cover is not locking in place



