

BULL BAR RANGE

◆ **LEGENDEX** ◆



FITTING INSTRUCTIONS

VW AMAROK 2011-2020

sales@legendex.com.au | (07) 3203 2333 | legendex.com.au

FITTING INSTRUCTIONS

SEE VARIANTS SECTION AT BOTTOM IF YOUR AMAROK IS SLIGHTLY DIFFERENT.

1 Unwrap the bullbar carefully to avoid sharp objects damaging paint, carefully inspect the bar for any damage caused in transit, We will not accept any damage claim once installation has begun its best to lay the bullbar on a stand or soft surface. Unbolt the cradle from the bullbar and also take out the fog light brackets

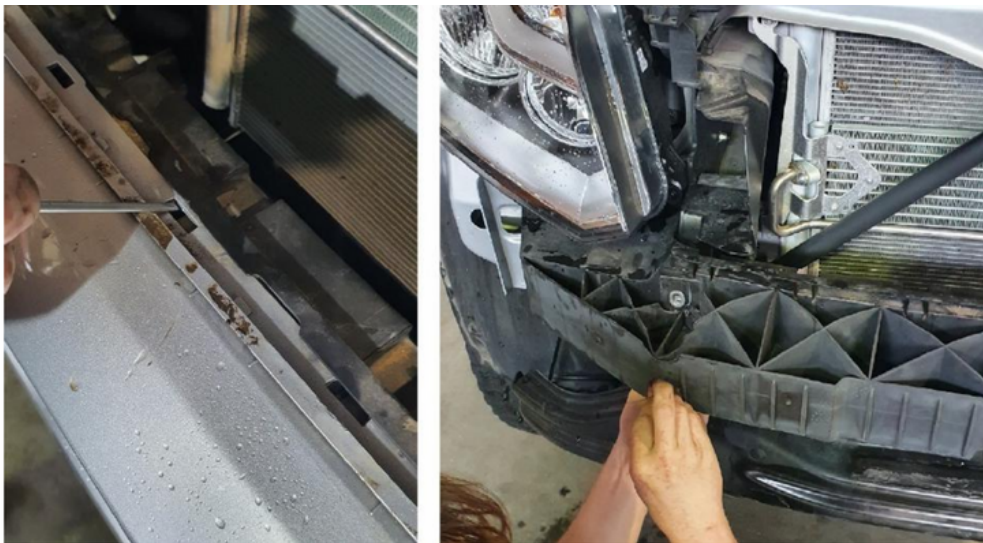
2 Remove factory grille and bumper from the car, several screws and bolts under the wheel arches and under the front end of the car. The bumper is clipped into the grille so after undoing the top bolts you will need to pull sharply on the grille towards you to get it to unclip. 2 bolts are behind the number plate. You can use a pick tool or flat head to pry up the bumper from its securing points along the area of the grill connected to.



FITTING INSTRUCTIONS

3

Once loose or partially removed disconnect the park sensors if you have them, unclip the air sensor from the grill by pulling it off or using pliers. You will also have to unclip some of the wiring from the plastic bumper/grill.



4

Remove factory bash plate so you can access behind the factory support later on and remove the 2 clips holding the plastic air dam and drill plastic hole out to suit bolts EG 10mm

5

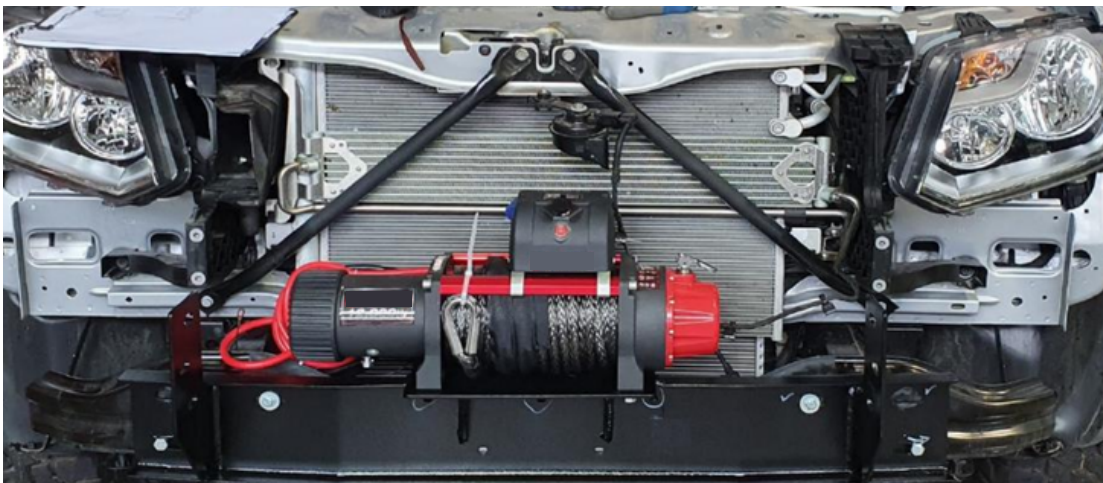
Remove the 2 clips holding the plastic air dam and drill plastic hole out to suit bolts EG 10mm



FITTING INSTRUCTIONS

6

Now install the cradle centered with the 2 outer bolts on each side, you can use the 3 plastic tabs on the car in front of the radiator as center link. The cradle is approx. 1100mm long & center point is approx. 550mm

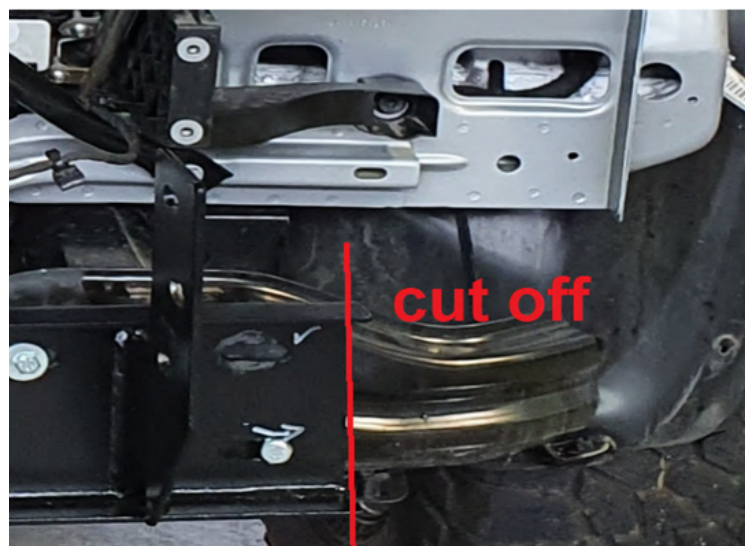


7

Once centered mark and drill out securing points under winch plate. Tighten lower bolts first in order to align cradle vertically.

8

Cut off remaining end sections which pass the cradle on both sides.



FITTING INSTRUCTIONS

9

Now it's time to install the bullbar. We recommend you bolt on the cradle finger tight enough so you can move the cradle left to right if you need too. Use 10-15mm foam (clark rubber) or cardboard of equal depth and tape to the bullbar where bar meets guards, use a tape which does not affect the paint. The way in which you tighten the cradle may affect alignment. Since the amarok mounting chassis is not even surface if you tighten bolts before trying to semi align the bar it may pull bullbar forward or back etc.

WE INSTALL BULLBAR FORWARD OF THE LIGHTS APPROX 2-3MM TO AVOID ANY CLASH AND LEAVE 20-25MM GAP BETWEEN BAR AND GAURDS. IF YOU DO NOT LIKE GAP PLEASE PURCHASE 20MM PINCH WELD SIDE BULB FROM OUR ONLINE STORE OR CLARK RUBBER. IMAGE SHOWS PINCH WELD UNDER HEADLIGHTS AS WELL. WE RECOMMEND PINCH WELD BETWEEN BAR AND SIDE GAURDS ONLY.



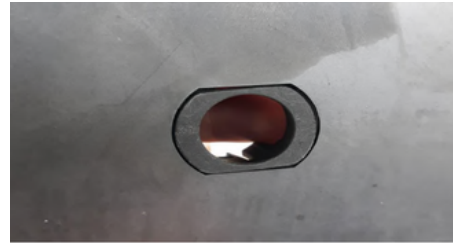
10

Install center bolts through fog light opening first which allow you to line up bullbar better. Once aligned in place now install remaining bolts.

FITTING INSTRUCTIONS

11

Reinstall the park sensors and the air sensor. Air sensor clips onto metal. Park sensors reuse factory plastic surrounds. Park sensors reuse existing plastic from plastic bumper, heat and pry off. Lower middle sensor inserts cut down to suit max height of metal bullbar lip. Either glue or double side tape or both. Ensure correct orientation. If your model has round sensor paint sensor backing to match bar



**PAINT TO MATCH BAR COLOUR
BEFORE GLUE IN**



12

Cut the guards to suit profile of the bullbar and secure with cable tie to original metal support.



13

Connect up fog lights. Reinstall factory bash plate.

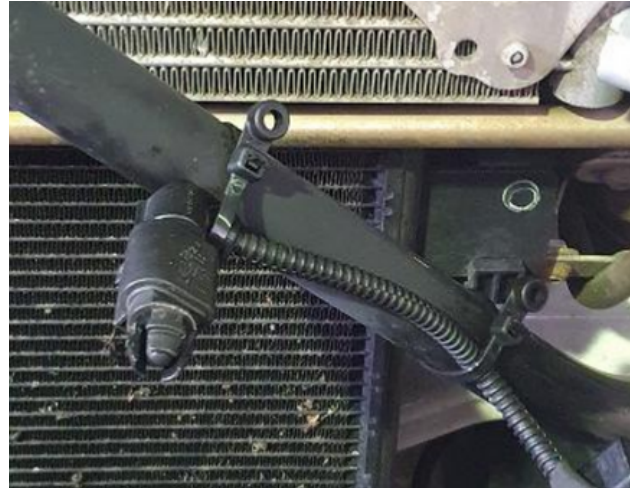
FITTING INSTRUCTIONS FOR VARIANTS

1

Some amaroks may have clip in bumper air sensor, if so cable tie to radiator support.

2

Amarok with round sensor and no rectangular housing paint the sensor backing same colour as bar to suit



3

If you have metal bash plate simple drill through and mount bolts on the angle, ensure you mount bolt close as far in as possible.



4

If your grill is moulded to the bumper you will need to air saw, Stanley knife or grind it away from the bumper, clean up and install in place with cable tie back to radiator support.



FITTING INSTRUCTIONS

VW AMAROK 2011-2020

sales@legendex.com.au | (07) 3203 2333 | legendex.com.au