

**BULL BAR RANGE**

# ◆ LEGENDEX ◆



## ***FITTING INSTRUCTIONS***

**NISSAN PATROL Y62 2020-ONWARDS**

sales@legendex.com.au | (07) 3203 2333 | legendex.com.au

# REMOVAL OF FACTORY BUMPER

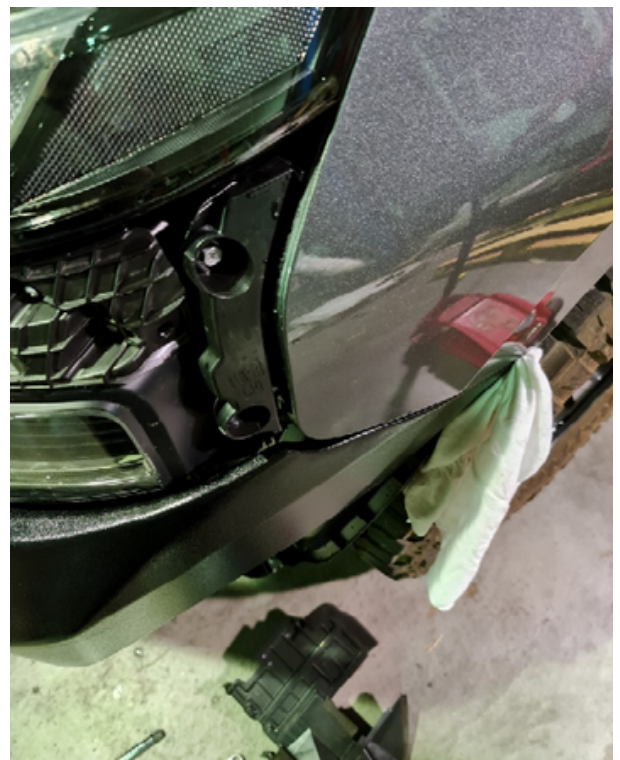
---

- 1** Remove the front bumper and grille. The grille is held in by 4 points, 2 on the headlight which requires a squeeze to get undone and the middle lower 2 on each side you pull. Do not pull on grille upper tabs

The bumper is held in by various bolts under the car and guards, 10mm bolt inside the guard which you need to undo by pulling the mud flap to access. Then using a pick tool you remove the corner facia to access other bolts. You need to undo the top covers in the engine bay to remove the grille, also using pick tool to pop them up.



- 2** Remove the black bumper retainer shown in this photo held in by 2x 10mm bolt screws. Unclip all harnesses including the camera harness on the grille behind the badge. You will need to extend the harness for radar by unclipping the retaining plugs from the car.



# REMOVAL OF FACTORY BUMPER

---

- 1** You will need take care with radar, avoid rattle gun vibration near it etc and try to keep unplugged for shortest time possible.



\*SEE 2ND LAST PAGE FOR RADAR ALIGNMENT, YOU WILL NEED TO LEVEL ONCE BAR INSTALLED. BEFORE YOU PUT ON THE BASH PLATE

---

## INSTALLATION OF BULL BAR

Follow on to next page for the installation of your new Legendex Bull Bar.

The Y62 bull bar is designed to suit slim line flares, if you do not have this follow guide on page 7 for extra install steps.

# INSTALLATION OF BULL BAR

---

- 1** Remove the air dams near headlights or you can trim to suit the profile of the bar which is only possible by putting a bar on marking and removing. If you are fitting a winch unbolt the middle support bracket in the centre of the car above the winch plate – Fits runva 11xp premium height.



- 2** Install the cradle onto the chassis rail ends. Bolts should be finger Tight as you need to align the bulbar later. The bar comes with 2 chassis extension brackets which get bolted to front of the chassis before the cradle.

# INSTALLATION OF BULL BAR

---

- 3** Remove the sensors by unclipping the harness from the bumper, ensure you maintain the correct sensor direction, you remove all double-sided tape sensors by using a heat gun and razor blade, they are double-sided taped on. The park sensors try and clean up the excess double-sided tape and glue it into the new bulbar with the correct orientation, if you are using super glue be careful with the amount applied as glue vapours will escape through the front of the bar and leave white residue( you may wish to apply tape front side of the bar to prevent this) You must support the outside wires by pushing existing retaining clip onto the bulbar reinforcements



# INSTALLATION OF BULL BAR

---

## 4

You also glue in the washer jets. The water line for washer jets can either be cable tied where possible or you can use double-side tape cable tie patches (not supplied)



## 5

The radar simply bolts in with 3 bolts into a new location

We recommend you bolt on the cradle finger tight enough so you can move the cradle left to right if you need to. Use 10-15mm foam (clark rubber) or cardboard of equal depth and tape to the bulbar where the bar meets the guards, use tape which does not affect the paint.

**NOTE :** under each headlight 2 little plastic tabs which you can cut off with razor

This will create an even gap on both sides, vs trying to align 1 side at a time. We also recommend using same foam under the head lights to maintain the correct gap

# INSTALLATION OF BULL BAR

---

## 6

At this point with everything loose do a quick line up with foam in place. Once the bar is aligned left to right you can tighten the cradle. At this point install all the bolts loose into slots. If you have a helping hand have them hold bar in place while you tighten the middle bolt only to about 70% this will allow you to tilt the bar back or forth to bring it into line with the guards. It also has some play up and down if needed.

## 7

The black inner guards need to be trimmed to suit the profile of the bulbar and be secured in place so they do not move around.

# INSTALLATION OF – NON SLIM FLARES

---

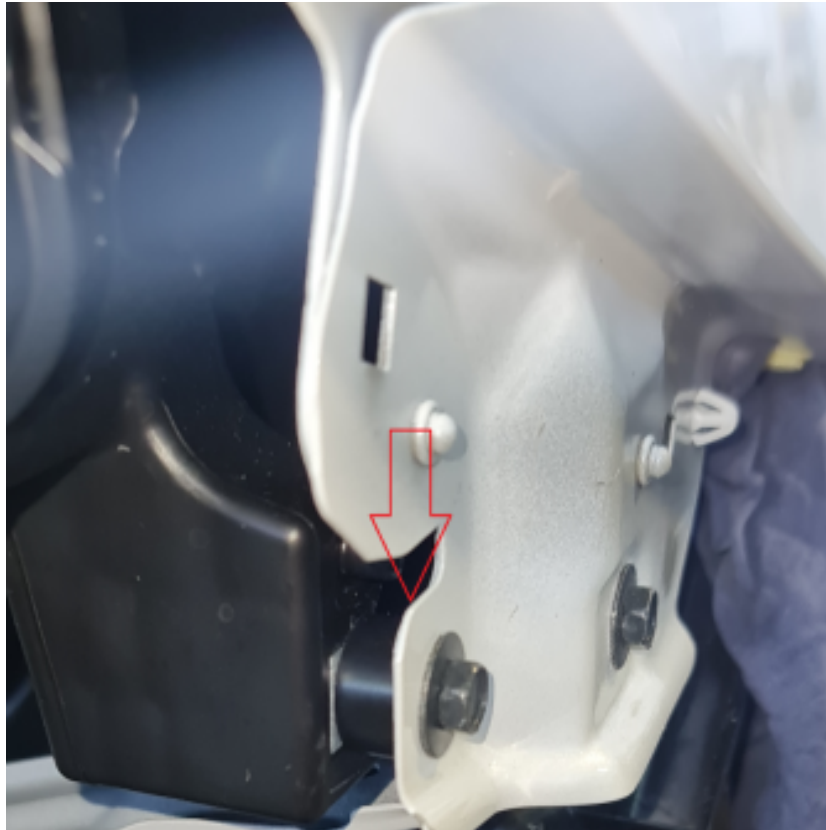
The Y62 bullbar is designed to suit slim line flare, if you do not have follow guide below



# INSTALLATION OF - NON SLIM FLARES

---

Spacing guards to suit bar - each side of guard is held in with 2 bolts, remove bolts and install washer x2 each side as per below. use the longer factory bolts you removed from the bumper in lieu of original bolts as they are too short



Bash Plate : you will need to install a rivnut on drivers side to secure bash plate



# INSTALLATION LAST TOUCHES

---

## Alignment

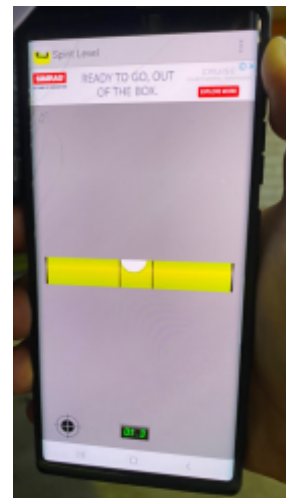
The bulbar has slotted holes which allow the bar to be adjusted forwards or backwards on either side. If you have done without foam and have 10mm gap on the left side and 6mm gap on the right side the bar should be repositioned to create an even 8mm gap on both sides.

## Pinch Weld & Movement

You may prefer to fill the gaps between bar and guard with pinch weld (not supplied) Available from clark rubber or online you can purchase 1m bulb type pinch weld for approx. \$12 per meter. If you have heavy loaded 4wd, eg canopy or tools you may find your body moves far more than standard tub and that your bar needs to be positioned further away from the guards, in this case the use of pinch weld may suit your needs to give the continuous look

## Radar Level

Download Level App Radar Must be max 1.5Degree. 0 Degree level optimal In your kit you will find black spacers to get radar level depending on how you aligned the bar on tilt you will need to combine spacers or cut them until radar is level. once confirmed you can install the cover



## Paint Protection

If you have purchased a colour coded bulbar, you must keep in mind the paint is fresh, while it is 2pac painted and baked the coating takes several weeks to fully cure and harden, in this time you should minimize the amount of debris which can strike your bar. If you do get stone chips later in time you can purchase paint matched pens for approx. \$34. Its critical you maintain and look after your bar by touching up stone chips then light buff to blend in





# ***FITTING INSTRUCTIONS***

**NISSAN PATROL Y62**

**sales@legendex.com.au | (07) 3203 2333 | legendex.com.au**