



LEGENDEX ROCK SLIDERS

PRODUCT CODE: P-RS-EVR-1

Ford Everest Wagon 2015-2020

PRODUCT CODE: P-RS-EVR-1



CHECK YOUR PACK LIST

Once you have unpacked the system from the box make sure you have all parts that are listed on the packing list below.

COMPONENTS

RS-EVR-1phs SLIDER PASSENGER SIDE x 1

RS-EVR-1phs SLIDER DRIVERS SIDE x 1

TREAD BOLTS TREAD PLATE x 4

WIRE WITH CAPTIVE NUT TO SUIT

TOOLS REQUIRED

- 1x 16mm Spanner
- 1x 17mm Spanner
- 1x 19mm Spanner
- Bottle Jack | Trolley Jack Ideal
- Rubber Mallet
- Floor Mat
- Portable Light
- Wire Cutters

IMPORTANT BEFORE INSTALLATION

- Before installing your sliders park your vehicle on level ground ensuring it is in gear (or Park) and the handbrake is applied. Never use a jack to support the weight of the vehicle while working on it.
- Wear protective clothing including eye wear listed on the packing list below.

REMOVING ORIGINAL SIDE STEPS

- **BEFORE YOU START – DOUBLE CHECK** – that you have the correct sliders for the job.
- Check the invoice and the packaging.
- Remove packaging: Check you have all the correct parts and no damage from freight.
- You might need to wash the underbody before starting the job.
- Generously spray the bolts with WD40 (or other spray lube) and leave to penetrate.
- Each 4wd is different so you'll need to identify the correct spanner size

INSTALLING YOUR NEW ROCK SLIDERS

STEP 1

Locate and shape the rear wire with the captive nut to a U shape as shown in the image to the right.



STEP 2

At the back near the spring hanger, you will see chassis holes that match the photos shown on the right. This is the passenger side shown.

Feed the wire and shape it so that the captive nut is fed through as per the next 2 photos.



INSTALLING YOUR NEW ROCK SLIDERS

PRODUCT CODE: P-RS-EVR-1

STEP 3

The photo shown here is how the captive nut should look prior to positioning the Rock Slider in place for installation.



STEP 4

Now you will need to support the Rock Slider with a Jack.



STEP 5

The driver side is shown here. Feed the vertical bolt through to the top of the chassis and attach a nut (finger tight) to the top to support the slider to the chassis. This is a temporary set up which will be removed and refit.

At the rear of the Rock Slider, attach the vertical bolt through to the top of the chassis, again finger tight



INSTALLING YOUR NEW ROCK SLIDERS

PRODUCT CODE: P-RS-EVR-1

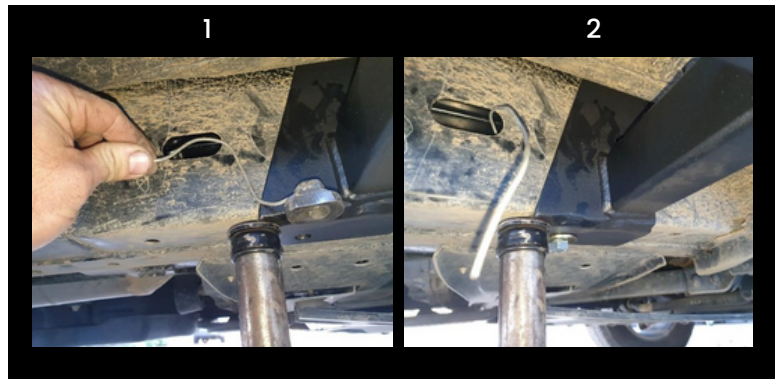
STEP 6

With the rear wire in place, line up the large bolt and washer to the captive nut and screw in finger tight.



STEP 7

Moving on to the front bracket, shape the wire with captive nut as per photo 1 here, Screw on the bolt vertically up to attach to the captive nut with wire, finger tight as per photo 2 here.



STEP 8

As shown on the right, screw on the bolt horizontally to attach to a second captive nut with the wire fed through to the chassis after the vertical one is fitted finger tight.



INSTALLING YOUR NEW ROCK SLIDERS

PRODUCT CODE: P-RS-EVR-1

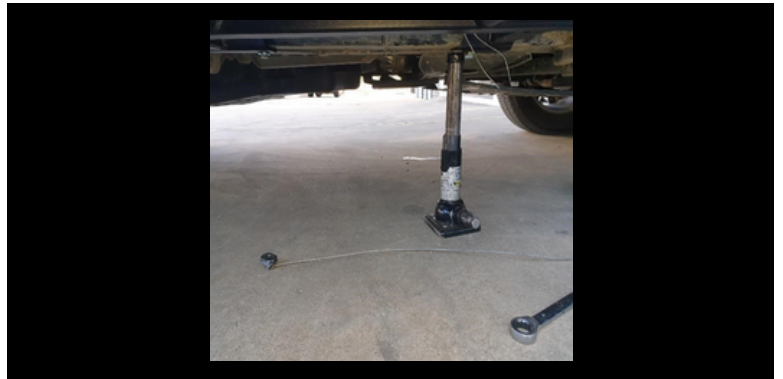
STEP 9

As shown here, remove the vertical bolt and nut supporting the centre mount as front and rear are now held in place.



STEP 10

The long wire with captive nut is fed through the slot where the 2 captive nuts with wires were previously fed for the front bracket. This can be awkward and may take some time to line up once you feed the bolt through to grab the captive nut. Once this is completed refit the vertical bolt.



STEP 11

This is one side complete with bolts attached.
Now you will need to tighten all vertical bolts on all 3 mounts as per photo below.



INSTALLING YOUR NEW ROCK SLIDERS

PRODUCT CODE: P-RS-EVR-1

STEP 12

Now you will need to tighten all horizontal bolts as per photo below.



STEP 13

As photo here shows, trim all excess wires with wire cutters and tuck inside the chassis rails. This will help with ease of removal in the future if required.



FINAL NOTES ONCE SLIDERS ARE FITTED

NOW THAT THE SLIDERS ARE FITTED TO YOUR VEHICLE:

- Double check all nuts and bolts are tight.
- Start the vehicle and listen for any vibration / rattle noises.
- Check the tread plate bolts are tight as well.
- Also re-check tightness of the bolts after 20-50km

WASHING AND RE-CHECKING

- DO wash after use – using a hose – NOT high-pressure cleaner
- IF you have damaged your coating in use- a high-pressure cleaner can/ will get underneath and lift the coating.
- If you notice any damage to the coating – respray with paint or underbody spray
- After every 4wd trip—re-tighten the bolts.
- After every 4wd trip—check the alignment of the slider.

NOTES



THANKS FOR CHOOSING A LEGENDEX PRODUCT

If you're on Facebook or Instagram we would love to show off your vehicle on our page. Simply tag us in a post with photos of your Legendex product using the tags below and we will feature your vehicle. @legendex on Facebook and Instagram